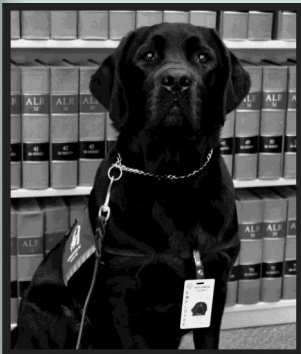


February 2018

Volume 8, Issue 1



Gibson {Photo provided by Sangamon County}

Service Dog to Visit Library February 28, 2018

The Library's February Study Break will have a special guest in addition to the usual treats and coffee.

Stop by the Dirksen Conference Room on February 28th from 3:00 - 4:30pm to meet Gibson, the Sangamon County Courthouse Facility Dog and Certified Service Dog!

Gibson, a 2 ½ year old black lab, will be here with his han-

dlers, Diane Bell (Director of Victim Services), Tami Richmond and Holli Gleason, to discuss the State's Attorney's work with Gibson and answer questions about the training staff received from Support Dogs Inc. Gibson joined the State's Attorney's staff in 2017 and was recently featured in the State Journal Register for his com-

forting and calming presence with victims of abuse and violence. Whether laying at a person's feet during a hearing or next to a child during a difficult interview, Gibson has a gift for understanding and helping people.

Stop by the Dirksen on Feb. 28th to meet Gibson and learn more!

Library Hours

Mon-Thu	8:00am-10:00pm
Fri	8:00am-6:00pm
Sat	Closed
Sun	Closed

Inside this issue:

Winter Woods Study Break	2
EndNote Software	2
3D Printer	2
Library Outreach	2
Featured Resource: Dynamed Plus	3
MRC: Interesting Donations	3
New Journal	3

Civil Service Employee of the Month

The Civil Service Employee of the Month for January 2018 is Penny White, Business Administrative Associate for the Department of Medical Humanities and the Medical Library. Penny spends 25% of her time working in the Library but gives 110% whether she's answering

budget questions or filing all the paperwork needed to keep things running smoothly.

The Library celebrated Penny's award at the January staff meeting with cake and one of Penny's favorite snacks—Hot Cocoa!



Exhibits

IPPS Exhibit

Once again we welcomed the artists of the Illinois Prairie Pastel Society to the Medical Library. Throughout January, Library staff and patrons enjoyed artwork by 30 local artists displayed during the Exhibit. The "Meet the Artist" reception on January 18 attracted a crowd that filled the Library lobby.

Contact the IPPS if you are interested in painting with pastels - illinoisprairiepastel-society.org

Coming in February

A traveling exhibit from the National Library of Medicine will be on display from February 12—March 24, 2018

Surviving and Thriving: AIDS, Politics, and Culture.

The exhibition explores the rise of AIDS in the early 1980's and the evolving response to the epidemic over the last 30 years.

The title *Surviving and Thriving* comes from a book written in 1987 by and for peo-

ple with AIDS that insisted people could live with AIDS, not just die from it. Jennifer Brier, the exhibition curator, explains that "centering the experience of people with AIDS in the exhibition allows us to see how critical they were, and continue to be, in the political and medical fight against HIV/AIDS." *Surviving and Thriving* presents their stories alongside those of others involved in the national AIDS crisis.

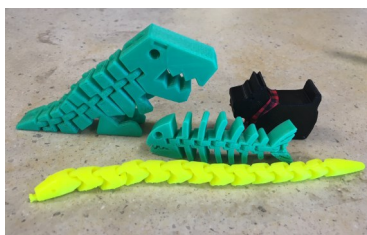
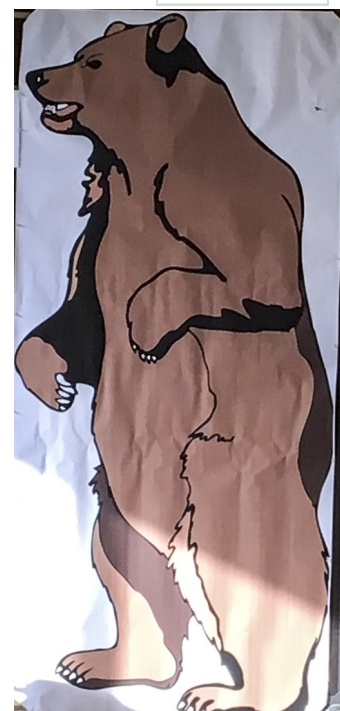
“Students could take selfies with a bear...”

Winter Woods Study Break

December 2017

The Medical Library held a Winter Woods-themed study break for 2nd year students in December.

Students could take selfies with a bear and indulge in coffee, hot cocoa, hot cider and various treats.



3D PRINTER

The assortment of plastic toys on the Library front desk were printed with our XYZ da Vinci 3D printer.

Models for these toys were downloaded from thingiverse.com and printed in ABS plastic. We have also printed models from the NIH 3D Print Exchange (3dprint.nih.gov) and are looking for more objects to print! If you have a printable model (as an .stl file) that you would like us to print, contact:

reference@siumed.edu

More information at <http://libguides.siumed.edu/3Dprinting>

EndNote Software



The Medical Library has made arrangements for IT to distribute EndNote software to faculty, students, and residents.

Users no longer need to go through Carbondale.

To request the software:

Email techsupport@siumed.edu and be sure to specify PC or Mac.

If you are interested in learning how to use EndNote, the Library offers workshops on

both EndNote and EndNote Online. The next workshop on EndNote is scheduled for FRI, Feb 23, 2018, 9:30-11:00 AM

Email training@siumed.edu to register or to request an individual session.

Library Outreach

As an outreach partner for the National Network of Libraries of Medicine's Greater Midwest Region, the Medical Library supports the NLM mission of

“1) providing equal access to biomedical information to all U.S. health professionals; and

2) improving the public's access to information to enable them to make informed decisions about their health.”

Our outreach activities aid SIU Medicine's mission to “assist the people of central and southern Illinois in meeting their health-care needs” by helping people locate authoritative, trustworthy information and distinguish between reliable and inaccurate or biased sources.

This year we are focusing our outreach efforts on creating partnerships with public libraries.

In December, reference librarians trained Springfield's Lincoln Library staff to use resources such as MedlinePlus, PubMed, and the Drug Information Portal to find information and answer questions that public library users may have about their health.

In the next several months we will visit other public libraries in the area, and then move our focus to libraries in underserved areas of Illinois.

Highlighted Resource : DynaMed Plus

We are pleased to announce that the Medical Library has upgraded to *DynaMed Plus*. Thanks to the generous support of Family & Community Medicine, *DynaMed Plus* is now available to everyone at SIU-SOM.

DynaMed Plus is an evidence-based clinical reference tool that provides access to the latest information on specific diseases, conditions, treatments and drugs pertaining to emergency medicine, cardiology, oncology, pediatrics and more.

Dynamed Plus features:

Overviews and recommendations—concise accurate overviews and evidence-based recommendations for action.

Graphics and images—aid diagnosis and treatment plans with thousands of medical graphics and images, including many from the American College of Physicians and the the American Medical Association.

Precise Search—delivers relevant results.

Expert reviewers—are an integral component

of the *Dynamed Plus* team.

Specialty content—includes thousands of topics covering emergency medicine, cardiology, oncology, infectious diseases, pediatrics, obstetrics and gynecology, and much more.

Micromedex® Clinical Knowledge Suite – includes drug content such as medication management and lab recommendations, including IV screening, medication advisory screening and summary drug information.

Mobile access—app for Apple or Android. For more info go to <http://dynamed.com/home/access-options/mobile-access>

A proxied link to *Dynamed Plus* (<http://libproxy.siu.edu/login?url=http://search.ebscohost.com/login.aspx?authtype=ip.uid&custid=s8990822&profile=dmp&groupid=main>)

has been added to the Key Resources list on the Library's website (<http://www.siu.edu/lib>).

“Dynamed Plus features ... concise accurate overviews and evidence-based recommendations for action.”

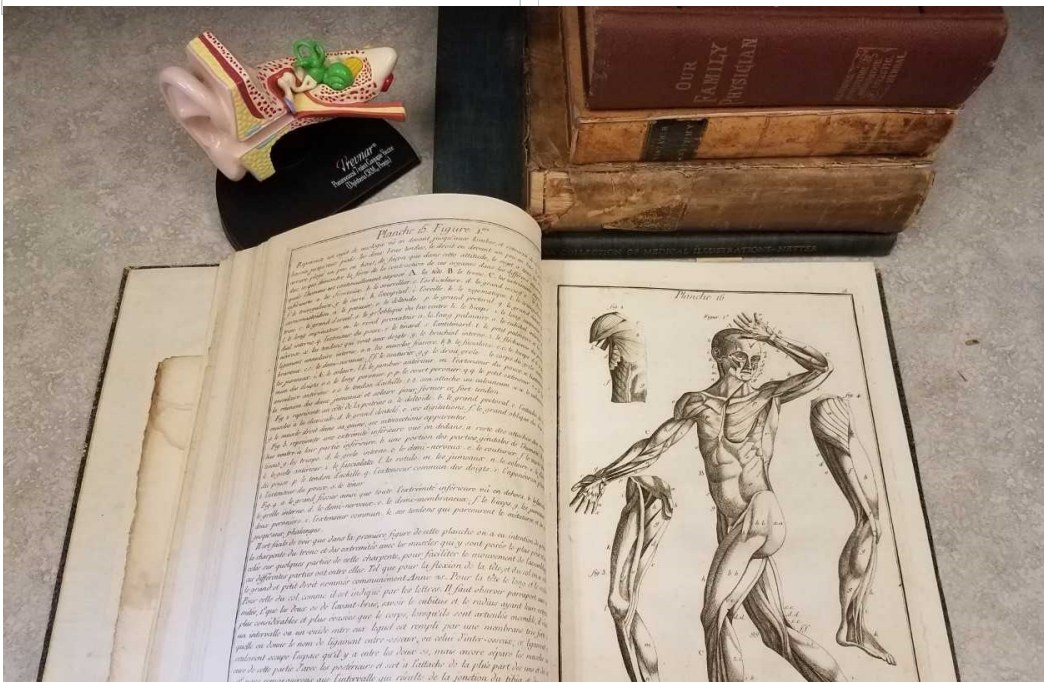
MRC: Interesting Donations

In the past year the Medical Resource Center has been the recipient of some very interesting donations.

Some of these donations, like ear models, journals, and various books, will stay at the

Medical Resource Center.

Many of the older books from as far back as 1844 will find their permanent home in the Archives/Special Collections in Springfield where they can be preserved.



NEW JOURNAL

Due to popular demand, the Library now subscribes to the *Journal of Craniofacial Surgery*. This journal publishes original articles, scientific reviews, commentary, and more on topics that range from practical aspects of craniofacial surgery to the basic science that underlies surgical practice.

SIU-SM users have digital access to all content published in the *Journal of Craniofacial Surgery* from 2001-present.

**SIU School of Medicine
Medical Library**

801 N. Rutledge Ave.
P.O. Box 19625
Springfield, IL
62794-9625

Phone:
217-545-2658
E-mail: reference@siumed.edu



Sam the skeleton dressed for the Winter Woods study break

Visit us on the Web
<http://www.siumed.edu/lib>

Library Monthly Training

Workshops scheduled for February:

Searching PubMed Including MEDLINE,
THU, Feb 8, 2018
@10:00-11:00 AM

Converting PowerPoint Presentations to Video,
FRI, Feb 9, 2018
@9:30-11:00 AM

How to Make a Poster in PowerPoint 2013,
MON, Feb 12, 2018
@9:30-10:30 AM

Photoshop: Preparing Images for Posters and Manuscripts,
TUE, Feb 13, 2018
@2:00-3:30 PM

EndNote Desktop,
FRI, Feb 23, 2018
@9:30-11:00 AM

Registration is required.

Springfield
contact: training@siumed.edu

Carbondale
contact: ircrequests@siumed.edu

Class descriptions may be found at
www.siumed.edu/lib/libclasses.html

Quick Source Learning Online Tutorials

Basic and Advanced Courses for Microsoft Office: Access, Excel, Outlook, PowerPoint, Publisher, and Word.

Basic and Advanced courses for Adobe: Dreamweaver, Photoshop, plus one free course for Adobe Acrobat XI.

Sign up each month for access.

Contact Research & Education staff at 217-545-2113 or reference@siumed.edu



1973 stamp from Chad celebrating Copernicus's accomplishments as an astronomer, mathematician and physician.

From the Library's
Special Collections