

# FORWARD. FOR YOU.

## Graduate Medical Education Annual Report

2019-2020



**SIU SCHOOL**  
*of* MEDICINE

## Message from the Chair

2020 marks the 50th Anniversary of SIU School of Medicine. Our first residents matriculated 2 years after the SOM was founded. 2019-2020 started out as many other academic years: making plans to celebrate our anniversary, adapting and rising to the standards expected by our accreditation bodies and patient safety goals, educating and developing learners and continuing in our journey to nurture and support our learners and each other. The advent of COVID-19 and the killing of George Floyd required us to re-focus our energies and reexamine our priorities. In that spirit, The Graduate Medical Education Committee (GMEC) rearticulated its SIU SOM GME Institutional Mission and Aims.

*SIU School of Medicine was established in 1970 to optimize the health of the people of central and southern Illinois through education, patient care, research and service to the community. For 50 years SIU has emphasized teaching and achieved national recognition as an innovator in medical education.*

*Our institutional aim is to train physicians in a variety of specialties who are well equipped to practice in small urban and rural communities. Our values, as articulated in the 2020-2025 SIU SOM Strategic plan, are that we:*

- are committed to an environment of discovery in which innovation, scientific inquiry, application of knowledge and creative professional achievement flourish.
- are committed to excellence and continuous improvement in all we do.
- collaborate and partner with the community.
- strive to be a just, fair, unbiased, and anti-racist organization.
- strive for equity in our relationships, hiring practices, teaching, research, access to care, delivery of care and partnerships.
- create compassionate and healing environments for all.

*Graduates of SIU residency and fellowship programs will be confident, caring and passionate physicians who will succeed and carry our values, and our commitment to social accountability, wherever they choose to practice.*

Our programs rose to the challenges presented by COVID-19 with dedication, resilience and educational creativity. Faculty, staff and learners adapted quickly to virtual opportunities for education and patient care. During the shutdown and incremental reopening of outpatient clinics, residents and fellows became early and enthusiastic telehealth adopters. Through April and May, over 40% of SIU outpatient care was delivered via telehealth. We continue to do relevant work and maintain strong relationships with our hospital partners. For the 5th consecutive year, SIU received ACGME Institutional Accreditation with no citations. This year we received ACGME approval for the Alton Family and Community Medicine Residency and welcomed Alton Memorial Hospital and Southern Illinois Healthcare Foundation as our newest affiliated training sites. Recruitment is underway and the first residents will matriculate in July 2021.

In this spirit, I proudly present the 2019-2020 GME Annual Report.



Karen Broquet, MD, MHPE  
Associate Dean for Graduate Medical Education  
Chair, GMEC

## Graduate Medical Education Committee (GMEC)

The GMEC is accountable for advising and monitoring all aspects of residency education in a manner to meet the needs of the residents, programs and hospitals as well as fully comply with the regulations and directions of the Accreditation Council for Graduate Medical Education (ACGME) and the Residency Review Committees. A list of GMEC members for the 2019-2020 academic year is included below.

### CHAIR

Karen Broquet, MD

### FACULTY

Richard Austin, MD  
Martha Hlafka, MD  
Harald Lausen, DO, AOA Director  
Paula Mackrides, DO, AOA Director  
Laura Shea, MD

### HOSPITAL ADMINISTRATORS

Rajesh Govindaiah, MD,  
CMO Memorial  
Breanna Nagel, HSHS St. John's  
Gurpreet Mander, MD,  
CMO HSHS St. John's

### LEGAL COUNSEL

Jennifer Graham, JD

### PROGRAM COORDINATOR

Rhonda Loyd

### PROGRAM DIRECTORS

Gordon Allan, MD  
Devin Amin, MD  
Sacharitha Bowers, MD  
Careyana Brenham, MD  
Dana Crosby, MD  
Samantha Dial, MD  
William Dixon, MD  
M. Rebecca Hoffman, MD  
Douglas Hood, MD  
Jessie Junker, MD  
Ranjiv Matthews, MD  
Erica Nelson, MD  
Janet Patterson, MD  
Prasad Poola, MD  
Quincy Scott, DO

Santosh Shrestha, MD  
Nicole Sommer, MD  
Vidya Sundareshan, MD  
(Fellowship)  
Andrew Varney, MD  
James Waymack, MD  
Vincent Zata, MD

### RESIDENTS

Brittany Blaise, MD  
Nana Cudjoe, MD  
Katherine Hyon, MD  
Breck Jones, MD  
Samantha Knight, MD  
Greg Lee, MD  
Suhayb Ranjha, MD

## Review of Institutional Performance 2019-2020

### REVIEW OF PROGRAM PERFORMANCE

ACGME Resident Surveys  
ACGME Faculty Surveys  
ACGME Well-Being Surveys  
Annual Accreditation Letters and Citations  
Annual Program Evaluations  
Clinical & Educational Work Hour Compliance  
Monitoring of Transitions of Care  
Scholarly Activity and Case Numbers  
Self-Studies  
SIU SOM End of Year Evaluations

### INTERNAL REVIEWS

Quincy Family & Community Medicine  
Quincy Sports Medicine  
Vascular Surgery

### SPECIAL REVIEWS

Carbondale Family & Community Medicine  
Radiology

### MOCK SITE VISIT

Hematology and Oncology

### SELF-STUDIES

Scheduled Self-Studies were postponed by the ACGME

### GMEC SUB-COMMITTEES

Annual Program Evaluation  
Well-Being

### REVISED POLICIES AND PROCEDURES

Closure / Reduction Policy  
Credentialing Policy

Demonstration of Patient Safety Experiences Policy  
Designated Osteopathic Resident Appointment Policy  
Due Process Policy  
Eligibility & Employment Authorization Policy  
Impairment Policy  
Legal Papers Served in the Clinical Setting Guidelines  
Moonlighting Policy  
Social Media Policy  
Transition of Care / Handoff Policy

### LEADERSHIP DEVELOPMENT

2 new Program Directors  
2 new Program Coordinators

**Goal 1**

**Establish and implement a process to verify residents' competency to perform procedures without direct supervision (Carry over from 2018-2019)**

For bedside procedures, it has become an ACGME requirement and Clinical Learning Environment Review (CLER) expectation that programs have a process for their Clinical Competency Committee (CCC) to assess and document any individual resident's achievement of competence to perform a specific procedure without direct supervision (procedural autonomy), and to ensure that residents who have been granted procedural autonomy know when they must involve their attending or senior resident (patient acuity, etc.). We are also expected to establish a mechanism for the clinical care team to be able to verify the level of procedural autonomy for an individual resident. Work toward this goal was interrupted by COVID and has recently resumed. The GMEC [Supervision Policy](#) was revised to further delineate these expectations. Templates and How to Guide are being developed to help programs standardize their process. Memorial Health System hospitals are in the process of adopting a new provider credentialing platform. We hope to pilot the use of this platform to make the information available to clinical care teams.

**Goal 2**

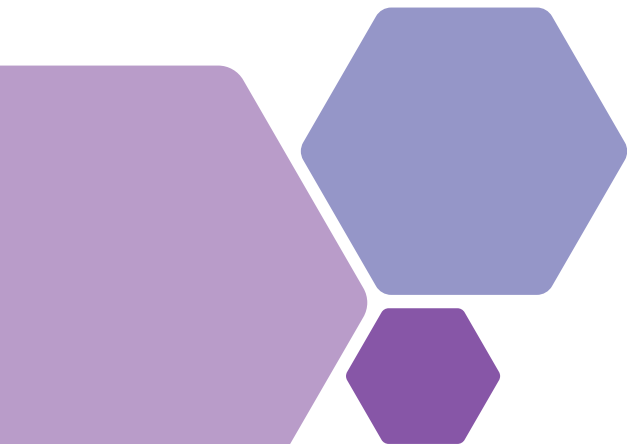
**Improve standard setting, oversight and supervision/monitoring of high risk transitions of care (TOC) (Carry over from 2018-2019)**

SIU GME programs have a well-established set of content and communication standards for transitions of care. This goal was established to focus on TOC settings with a higher risk for loss of information. The GMEC [Transitions of Care Policy](#) was revised to more clearly delineate TOC responsibilities and serve as an educational tool. Each program was charged with identifying their highest risk TOC, identifying areas for improvement and implementing changes via one or more PDSA cycles. Work toward this goal was interrupted by COVID. Our target date for programs to complete their TOC PDSA findings has been moved back to late 2020.

**Goal 3**

**Provide programs with historical data on trainee composition and provide education to GMEC on the holistic recruitment of candidates who are Underrepresented in Medicine (URM).**

GMEC has historically set far reaching, multi-year goals as part of its Annual Institutional Review (AIR) process. We formulated these concrete goals to ensure that program directors have the needed vocabulary and context as we progress on our ongoing journey toward an inclusive and diverse training environment. These activities both occurred in February of 2020. Although the journey toward equity and inclusivity continues, this particular AIR goal was retired as having been met.



Academic Program Overview			
	Springfield	Affiliates	Total
# Residents & Fellows	298	53	351
# Accredited Residency Programs	17	3	20
# Accredited Fellowship Programs	9	2	11
# Non-Accredited Fellowships	1	N/A	1

Program Accreditation Status			
PROGRAM	Accreditation Status	PROGRAM	Accreditation Status
Dermatology	Continued	<b>Fellowships</b>	
Emergency Medicine	Continued	Adult Reconstructive Surgery	Continued
FCM - Alton	Initial	Carbondale Sports Medicine	Continued
FCM - Carbondale	Continued	Cardiovascular Disease	Continued
FCM - Decatur	Continued	Child Psychiatry	Continued
FCM - Quincy	Continued	Colon & Rectal Surgery	Continued with Warning <sup>^</sup>
FCM - Springfield	Continued	Endocrinology	Continued
Internal Medicine	Continued	Hand Surgery	Continued
Med/Psych	N/A	Hematology & Medical Oncology	Initial
Neurological Surgery	Continued without Outcomes	Infectious Diseases	Continued
Neurology	Continued	Pulmonary Disease*	Continued
OB-GYN	Continued	Quincy Sports Medicine	Continued
Orthopaedics	Continued	<b>Other</b>	
Otolaryngology	Continued	Institution	Continued
Pediatrics	Continued		
Plastic Surgery	Continued		
Psychiatry	Continued		
Radiology	Continued		
Surgery	Continued		
Urology	Continued		
Vascular Surgery	Continued		

\* Pulmonary Disease transitioned to Pulmonary Disease & Critical Care Medicine on 7/1/20.  
<sup>^</sup> 2019 accreditation status (2020 status is pending)

## Resident Satisfaction with Training

Resident Satisfaction with Training						
PROGRAMS	ACGME Resident Survey (Reports only available for programs with 4 or more residents)					
	Overall evaluation of program			Overall opinion of the program		
	Percentage of responses					
	Very Negative / Negative	Neutral	Positive / Very Positive	Definitely / Probably Not Choose Again	Might or Might Not Choose Again	Probably / Definitely Choose Again
Dermatology	0%	0%	100%	0%	0%	100%
Emergency Medicine	0%	5%	95%	0%	5%	95%
Endocrinology	0%	0%	100%	0%	0%	100%
FCM - Carbondale	0%	16%	85%	11%	26%	63%
FCM - Decatur	0%	0%	100%	0%	0%	100%
FCM - Quincy	0%	0%	100%	0%	0%	100%
FCM - Springfield	0%	4%	96%	0%	12%	89%
Internal Medicine	8%	4%	87%	9%	15%	76%
Med/Psych	0%	0%	100%	0%	0%	100%
Neurological Surgery	0%	0%	100%	0%	0%	100%
Neurology	9%	0%	91%	0%	0%	100%
OB-GYN	0%	0%	100%	0%	6%	94%
Orthopaedics	0%	7%	93%	7%	7%	87%
Otolaryngology	11%	0%	89%	11%	0%	89%
Pediatrics	0%	0%	100%	0%	0%	100%
Plastic Surgery	0%	0%	100%	0%	0%	100%
Psychiatry	0%	5%	95%	0%	0%	100%
Pulmonary Disease	0%	0%	100%	0%	0%	100%
Radiology	0%	0%	100%	0%	0%	100%
Surgery	0%	6%	94%	0%	6%	94%
Urology	0%	0%	100%	0%	0%	100%
Vascular	0%	20%	80%	0%	20%	80%
All Programs/Institution	2%	4%	95%	2%	7%	91%

In 2019, the ACGME established a common standard for all specialties to assess program success in preparing their graduates for successful Board Certification:

- The program's aggregate pass rate of those taking the examination for the first time must be higher than the bottom fifth percentile of programs in that specialty.
- Any program whose graduates have achieved an 80 percent pass rate will have met this requirement, no matter the percentile rank of the program for pass rate in that specialty.

In addition to first-time pass rates, the ACGME recognizes that ultimate board certification is a valuable parameter of program quality. Graduates are eligible for initial certification for up to seven years from completion of residency. Therefore, programs report board certification status for the cohort of board-eligible residents that graduated seven years earlier. (ACGME will eventually calculate a rolling three-year average of the ultimate board certification rate and monitor it. They have not, as yet, established a minimum standard for ultimate certification.)

We do not have access to our programs' percentile rankings in their specialty. The table contains three year rolling pass rate for first time takers and the ultimate certification rate for 2012-2013 graduates.

## Board Exam Performance

PROGRAM	Ultimate Board Certification Status for 2012-2013 Graduates	3-Year Rolling Pass Rate for First Time Takers	
		Written	Oral
Dermatology	100%	100%	100%
Emergency Medicine	100%	100%	89%
FCM - Carbondale	100%	100%	n/a
FCM - Decatur	83%	100%	n/a
FCM - Quincy	100%	94%	n/a
FCM - Springfield	100%	97%	n/a
Internal Medicine	100%	89%	n/a
Med/Psych	100%	IM-67%, Psy-100%	
Neurological Surgery	No graduates	n/a	n/a
Neurology	100%	88%	n/a
OB-GYN	100%	75%	75%
Orthopaedic Surgery	100%	100%	100%
Otolaryngology	100%	100%	100%
Pediatrics	100%	90%	n/a
Plastic Surgery	100%	100%	100%
Psychiatry	100%	62%	n/a
Radiology	100%	89%	n/a
Surgery	100%	100%	100%
Urology	100%	100%	88%
Vascular Surgery	No graduates	100%	67%
<b>FELLOWSHIPS</b>			
Adult Recon	0%	100%	100%
Carbondale Sports Medicine	100%	100%	n/a
Cardiovascular Disease	No graduates	n/a	n/a
Child Psychiatry	100%	0%	n/a
Colorectal Surgery	100%	100%	100%
Endocrinology	100%	100%	n/a
Hand Surgery	100%	100%	100%
Hematology/Oncology	No graduates	n/a	n/a
Infectious Diseases	100%	100%	n/a
Pulmonary Disease	100%	75%	n/a
Quincy Sports Medicine	100%	66%	n/a

At the onset of the pandemic, we developed an SIU GME Redeployment Plan to provide the framework and allowable parameters in the event the volume of COVID patients required residents to be externally redeployed to fill clinical needs outside of their specialty. Resident functional levels and capabilities were established and supervisory requirements were outlined. Thankfully, we have not had to implement the Redeployment Plan. SIU Residents and Fellows were instrumental within their programs in meeting patient care and community needs as the Sars-CoV-2 pandemic unfolded. Pulmonary Disease and Critical Care Medicine fellows began assisting with preparations for the pandemic prior to the first case in Springfield, helping to create, implement and update best practice protocols for both patient care and staff safety, and have been continuously involved in direct patient care. Infectious Disease Fellows assisted with triage

before COVID testing was widely available and have provided vital consultation to hospitalist services regarding clinical management. They have been instrumental in developing protocols and guidelines for testing, infection control and antibiotic stewardship. Internal Medicine residents participated in the care of COVID patients indirectly by supporting attending physicians in order entry, family and nurse communication and note preparation. Carbondale, Quincy and Springfield Family Medicine residents provided COVID screening and testing. Springfield and Decatur Family Medicine residents helped provide care for patients in the COVID unit at Memorial Medical Center and Decatur Memorial Hospital. Sports Medicine fellows in Carbondale and Quincy played an integral role in developing COVID protocols for athletes at local high schools and community colleges.

**Program directors described the myriad of ways in which trainees, faculty and staff rose to the occasion during the early months of the pandemic. Excerpts include:**

*We have a cohesive team and when things become difficult, everyone is willing to step up and pitch in.*

*Residents did it all - they helped with COVID testing...they provided inpatient COVID care to patients, they saw patients in the office and adapted to PPE needs to provide safe care, and they quickly learned and provided telemedicine care to patients all while also continuing their education and helping with our new virtual educational platform. And now they are ready to start our Virtual Recruitment with new and innovative ideas including leading us in our social media outreach! As a program director I could not be more proud of all that our residents have done.*

*This pandemic is still not a closed chapter in our lives, but it has already unearthed an unknown potential in everyone to rise to the challenge, and shown the hidden virtues in them, such as resilience, camaraderie, and human compassion.*



**Over the summer, program directors were asked to reflect on the most valuable thing they learned about SIU SOM from the COVID experience. A number of common themes emerged:**

- We are a resilient, adaptive community
- SIU has effective relationships with institutions and organizations throughout the community
- We developed a new appreciation for the quality of our SIU SOM Leadership Team
- Clear and open lines of communication are invaluable
- We embraced Telehealth and will continue to incorporate
- We have been creative with technology, the use of limited physical space and opportunities to collaborate locally and nationally to maintain clinical care and education – and still have much to learn
- We gained a heightened awareness of health care inequity
- We developed a new appreciation for the importance of a disaster preparedness plan for clinical care, education, well-being and the financial viability of the institution



The ACGME Clinical Learning Environment Review (CLER) program was developed to increase the integration of GME into quality and patient safety endeavors at clinical teaching sites. In late 2019 the ACGME introduced [CLER Version 2.0](#), which significantly revised and expanded the CLER Focus Areas, sub-areas (called pathways) and the individual properties or behaviors that CLER site visitors use to assess GME learner and faculty engagement within our hospitals' learning environment.

**Current CLER Focus Areas are:**

- Patient Safety
- Health Care Quality
- Teaming
- Supervision
- Well-Being
- Professionalism

There are two significant changes that deserve mention. First is the addition of a Focus Area called Teaming, with multiple properties surrounding interprofessional learning, performance and patient engagement. Teaming replaces the previous Focus Area called Care Transitions; the properties from Care Transitions were either moved into the Common Program Requirements or redistributed as properties of the other five CLER Focus Areas.

Second is the inclusion of attending physicians in multiple expectations regarding transitions of care, participation in patient safety investigations, and both literacy and engagement in Quality Improvement and elimination of Health Care Disparities. Previously, the standards only included residents and fellows.

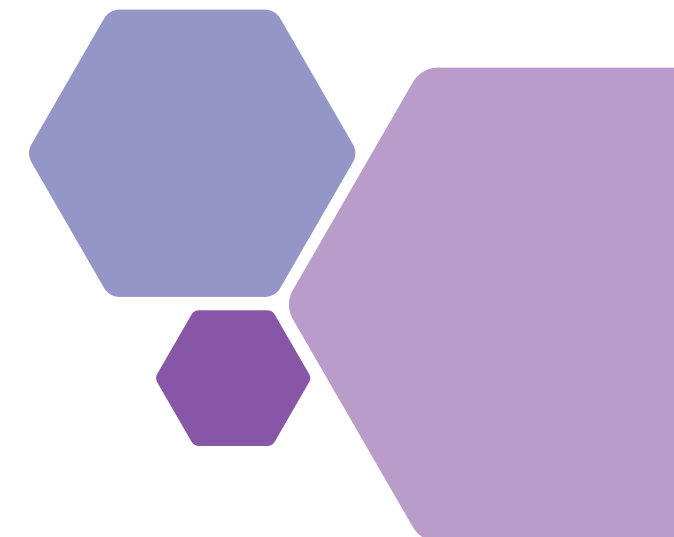
ACGME Resident Survey				
ACGME Resident Survey (Reports only available for programs with 4 or more residents)				
	Able to raise concerns without fear or intimidation	Comfortable calling supervisor with questions	Satisfied with faculty members' feedback	Quality of teaching received
ACGME program data reported in % compliant responses. Due to the pandemic, national data was not provided by the ACGME for comparison.				
PROGRAM				
Dermatology	83%	100%	83%	100%
Emergency Medicine	95%	100%	90%	100%
Endocrinology	100%	100%	75%	100%
FCM - Carbondale	74%	89%	63%	89%
FCM - Decatur	80%	87%	87%	100%
FCM - Quincy	88%	88%	88%	100%
FCM - Springfield	92%	96%	77%	100%
Internal Medicine	72%	83%	74%	87%
Med / Psych	71%	86%	71%	100%
Neurological Surgery	100%	100%	100%	100%
Neurology	82%	91%	82%	100%
OB-GYN	81%	100%	75%	100%
Orthopaedics	87%	100%	73%	93%
Otolaryngology	89%	100%	100%	100%
Pediatrics	86%	90%	76%	100%
Plastic Surgery	100%	100%	100%	100%
Psychiatry	95%	95%	95%	100%
Pulmonary Disease	60%	100%	80%	100%
Radiology	100%	100%	100%	100%
Surgery	94%	94%	72%	100%
Urology	89%	100%	100%	100%
Vascular	80%	80%	80%	100%
All Programs/Institution	86%	93%	82%	97%

**Other changes include an increase in:**

- Emphasis on interprofessional learning and work
- Oversight of faculty supervision of learner TOCs
- Onus on clinical sites for education, oversight and infrastructure support for
- Identifying and eliminating healthcare disparities
- Teaming
- Level of detail and specificity for oversight of supervision and verification of level of procedural supervision required for individual residents, and to maintain information systems to make this information available to nurses and other clinical care team members. (See AIR Goal #1)

CLER Version 2.0 frames each of the pathways and properties from the health system's perspective, recognizing that health care organizations create and are therefore primarily responsible for the clinical learning environment (CLE). This focus reinforces the importance of the interface between graduate medical education and the hospitals, medical centers, and ambulatory sites that serve as CLEs.

Although the focus of CLER is GME learning environments, these standards represent evolving consensus items from the National Collaborative for Improving the Clinical Learning Environment ([NCICLE](#)), which represents every major organization involved in hospital or medical education accreditation and patient care delivery. As such, we can expect to see growing concordance in CLE standards across ACGME, LCME, Joint Commission, etc. For the time being, the ACGME is only CLER reviewing Springfield hospitals, but SIU is responsible for ensuring engagement of these principles at all of our teaching sites. SIU's last CLER visit was to Memorial Medical Center in 2018. ACGME suspended CLER visits during the early months of COVID. They have resumed virtually.



# Quality Improvement Poster Symposium and Competition

Despite COVID restrictions, the SIU Graduate Medical Education Committee presented the

## 4th Annual SIU SOM Quality Improvement Poster Competition

virtually on April 8, 2020, with funding for awards provided by the Memorial Medical Center Foundation.

1st Place:

Clayton Parks,  
Psychiatry

“Increasing Efficiency through Delegation of Duties in a Developmental Disabilities Clinic”

**Increasing Efficiency through Delegation of Duties in a Developmental Disabilities Clinic**  
Ashima Doley Chakrabarty, M.D.; Patricia Baumann, M.D.; Alborz Javadzadeh, M.D.; Clayton Parks, M.D.; Jeffrey I. Bennett, M.D.

**BACKGROUND**

- The SIU Psychiatry Special Needs Clinic (SNC) provides individualized care to people with comorbid psychiatric illnesses and intellectual disability.
- Psychiatry residents rotating in the SNC have raised concerns about areas of inefficiency in clinic operations.
- Streamlining the SNC by optimizing workflow is an important goal for the SIU Department of Psychiatry, as most other non-staff-run developmental disabilities clinics have closed.
- The responsibilities of nursing staff and medical assistants (MAs) can be tailored to the needs of the practice.<sup>1,2</sup>
  - Helping optimize patient flow
  - Allow providers to see more patients and have more face-to-face doctoring time
  - Efficient administrative task flow with help of support staff

**STUDY OBJECTIVES**

- Reduce provider time spent on nonclinical tasks
- Improve satisfaction by increasing face-to-face time
- Shorten appointment times by increasing efficiency

**STUDY DESIGN**

- Identify areas of SNC inefficiency (e.g., total visit length, time spent discharging patients) by collecting appointment time data from a sample of clinics
- Develop an intervention to address these areas of inefficiency by modifying clinic workflow (Fig. 1)
- Implement the proposed change to clinic operations
- Obtain data on appointment times with the new workflow
- Monitor provider satisfaction data by administering surveys
- Employ descriptive analyses to evaluate for differences in outcomes with the new workflow

**STUDY RATIONALE**

**HYPOTHESES**

- Shorten appointment times by delivering more efficient care
- Improve resident physician satisfaction for this clinic
- Increase the number of patient appointment slots
- Increase outreach to an underserved population

**REFERENCES**

- Eden R. Maximizing Your Medical Assistant Role. *Prim Pract Manag*. 2016;23(5):5.
- Thakur S, Chapman S. What a medical assistant can do for your practice. *Prim Pract Manag*. 2008;12(1):3-6.

2nd Place:

Austin Beason,  
Orthopaedic Surgery

“Lean Six Sigma Approach to Improve Process Variation and Decrease Time-to-Surgery for Hip Fractures”

**Lean Six Sigma Approach to Improve Process Variation and Decrease Time-to-Surgery for Hip Fractures**  
Austin Beason, MD; Evan Davis, PT, MS, MBA; Jennifer Quastler, RN, DNRN; Deby Douglas; Caitlin West; Carol Hickey, MBA, RN; Mack Wightley, MD; Ronald Rasmussen, MD; Matthew Gardner, MD; Zak Gurney, MD; James Waymack, MD  
SIU School of Medicine, Memorial Medical Center, Orthopaedic Center of Illinois, Springfield Clinic Orthopaedic Group, Springfield, Illinois, USA

**PROBLEM STATEMENT**

- Recent literature supports reducing time-to-surgery for hip fractures by 24 hours after injury to decrease 20-day mortality and postoperative rates of pulmonary embolism, pneumonia and myocardial infarction.
- These complications and other associated sequelae (e.g., DVT) can result in longer lengths of stay, increased rates of readmission, and additional cost to the healthcare system.
- In 2016, an affiliated Level 1 Trauma Center provided hip fracture surgery at 24 hours for 6% of 22 patients.
- Our aim was to improve process variation, increase the percent of patient being treated in < 24 hours, and decrease time-to-surgery for hip fracture patients in our Level 1 Trauma Center.

**LEAN SIX SIGMA APPROACH: DMAIC**

**DEFINE**

- SCOPE** (i.e., inclusion criteria)
  - All hip fracture patients treated within Memorial Health System
  - Patients with hip fracture deemed appropriate for surgical intervention (i.e., non-traumatic, non-mechanical injury, non-reducible)
- OUT-OF-SCOPE** (i.e., exclusion criteria)
  - Hip fracture patients treated non-surgically
  - Trauma patients who are deceased

**MEASURE**

- See Simplified Process Map.

**ANALYZE**

- Average time from “Hospital Arrival” to “Surgical incision” for hip fracture patients in our health care system was 23.1 hours in 2018.
- Significant variation in time-to-surgery (6 data points above the upper control limit of 85.3 hours).
- Average time between when “Surgery Scheduled” and when “Patient to OR” was found to be 16.9 hours and accounted for 43.8% (CP = 43.8%) of the process variation.
- Admission directly to the hospital from Surgery through the Emergency Department (ED) was 18.4 hours to surgery.
- The day of the week a patient was admitted to the hospital and the type of admission (general, regional, MCI) had no influence on time to surgery.

**IMPROVE**

- See Intervention/Interventions.

**CONTROL**

- In the months following implementation of all interventions (August 2018) the time to surgery was decreased and was contributing to revenue of \$80k.

**SIMPLIFIED PROCESS MAP**

3.5 hr: Hospital Arrival → 5.9 hr: Power Plan Ordered → 7.3 hr: ED Departure → 15.2 hr: Surgery Scheduled → 22.9 hr: Patient in OR → 44 min: Incision → 23.1 hr: Total Time

**INTERVENTIONS**

- Hip Fracture Order Set (specific to ED and ORTHO)
  - Consult/Order Hospitalist
  - STAT Nursing Care (Foley, O2, Pain, etc.)
  - STAT PRCO
  - Activity (Bedrest)
  - Reduction (if appropriate hip, femur, pelvis)
  - LAB Tests (pre-op, INR, CBC, etc.)
  - OR Prep
  - FASTEST TIME FOR SURGERY
  - Plan readmission/Intubation
  - 1 day pre-surgery
  - Surgical Consent
- EDICU (Emergency Department Intensive Care Unit)
  - EDICU (Emergency Department Intensive Care Unit)
  - EDICU (Emergency Department Intensive Care Unit)
  - EDICU (Emergency Department Intensive Care Unit)

**CONCLUSIONS**

- The four months following implementation of all interventions showed mean monthly decrease in time-to-surgery for hip fracture patients with no associated rise in percentage of patients being treated in < 24 hours.
- These findings demonstrate that simple interventions can significantly improve the outcomes of a complex process.
- There is a critical role for physicians and residents to use in quality improvement initiatives.
- Understanding the complexity of a seemingly straightforward process (i.e., attending to fracture patient) is a challenge for all members of the care team.
- A major learning point from this work was the importance of interdisciplinary collaboration.

# Quality Improvement Poster Symposium and Competition

The committee was happy to see many submissions from all of the training programs with some projects focusing on patient care during COVID 19. This program will be offered virtually in April 2021. We look forward to seeing more great submissions from our trainees.

3rd Place (tie):

Pejman Jamkhov,  
Family Medicine

– Decatur  
“Smoking Cessation Counseling”

**Tobacco Cessation Counseling**  
Pejman Jamkhov MD, Mark Scott MD, Johnny Tenegra MD  
SIU Decatur Family & Community Medicine Residency Program

**Introduction**

The USPSTF recommends that clinicians ask all adults about tobacco use and advise them to stop using tobacco.<sup>1</sup> Tobacco use is the number one cause of preventable disease. From my survey of the residents at our clinic, it seems smoking cessation counseling is being done more than it is documented. My aim is to increase tobacco counseling provided by residents to current tobacco users aged 18 years and over by 10 percent by 01/01/2020.

**Methods**

I discussed the importance of smoking cessation counseling with all residents in a Federally Qualified Health Center (FQHC) program starting on January 1st 2019. After consultation with the clinic's Continuous Quality Improvement (CQI) committee and residents in the program on smoking cessation counseling it was found that counseling was being done more than it was properly documented into our Electronic Medical Record. The importance of proper documentation of appropriate counseling of smoking cessation and current smoking status was discussed by one to one meetings with each resident once every four months. We collected data for pre and post intervention, the intervention was throughout the year of 2019 starting 01/01/2019 and ending on 12/31/2019. This data was compared to calendar year 2018 starting 1/1/2018 to 12/31/2018 where no intervention was used. Our dependent variable was smoking cessation counseling, and this was calculated using the Uniform Data System which takes social history of smoking and a checkbox marked in medical residents EMR that smoking cessation was completed in the office visit.

**Results**

**UDS Monitoring Tobacco Cessation SIU FCM FQHC Decatur 2018, Pre-Intervention Data**

Compliant	Non-Compliant	Non-Compliant Counseling	Grand Total
904	1	429	1334
68%	0%	32%	100%

**UDS Monitoring Tobacco Cessation SIU FCM FQHC Decatur 2019, Post-Intervention Data**

Compliant	Non-Compliant	Non-Compliant Counseling	Grand Total
1236	205	30	1471
85%	14%	0.7%	100%

**Discussion**

In our study the intervention method used for one-on-one educational sessions did show an improvement in smoking cessation counseling and documentation by the residents. It may be beneficial to look into other methods to improve the compliance to smoking cessation counseling. One of which would be to add a mandatory setting or reminder within the electronic medical record that will encourage physicians to address both the current patient's smoking status and if smoking cessation counseling is provided. The limitations of this study was that we had no control group in the intervention year. The method of intervention was also a limitation in the study as education of medical residents was not objectively outlined and uniform.

**References**

<sup>1</sup>United States Preventative Services Task Force (2015). Tobacco Smoking Cessation in Adults Including Pregnant Women: Behavioral and Pharmacotherapy Interventions. Retrieved from <https://www.uspreventiveservicestaskforce.org/uspstf/recommendation/tobacco-use-in-adults-and-pregnant-women-cessation-and-interventions>

3rd Place (tie):

Shawn Poole,  
Vascular Surgery

“SIU Vascular Surgery: The Transition from Inpatient to Outpatient Management”

**Transitioning from Inpatient to Outpatient Management**  
SIU Vascular Surgery  
Shawn Poole MD MBA, Douglas B Hood MD, Safoora Choudry MD, Tian Zheng MD

**Introduction**

The patient population that vascular surgeons encounter require meticulous longitudinal care to optimize medical outcomes.<sup>1</sup>

SIU Vascular Surgery embarked on this quality improvement project to evaluate the current scheduling protocol for outpatient visits following hospitalization, as this represents a potentially difficult transition of care.<sup>2</sup>

**Methods**

Discharge → Reporting → Scheduling → Follow Up

**Results**

68 patients were followed during the collection period:

- 68/69 (100%) of vascular surgery patients were communicated from the Chief Residents to the Charge Nurse during the collection period
- 51/69 (73%) required outpatient follow up at intervals ranging from 2 days to 6 months
- 15/69 (21%) did not require scheduled follow up
- 100% of patients requiring follow up were scheduled for a follow up visit
- 3 patients were excluded due to readmission precluding appointment attendance
- Of the 51 patients requiring follow up:
  - 23/51 (45%) had achieved follow up by 01/31/2020
  - 31/51 (61%) had achieved follow up by 02/29/2020
  - As of 03/31/2020, 41/51 (80%) of the patients requiring follow up had been seen in clinic
  - 6 remaining patients require long term follow up, as distant as 5 months, following the collection period

**Discussion**

While our initial results for coordination of appointment scheduling and patient follow up are reassuring, there remain areas of potential improvement.

The data exhibits appointment scheduling at 100% and attendance of nearly 100%, although the long-term patient follow up data remains unknown.

Possible improvements to the current process include standardized patient follow up documents and creation of a formal database.

The conclusion can be made that the current SIU Vascular Surgery outpatient follow up protocol is successful, however, there remain multiple areas for improvement and standardization.

**Improvement Opportunities**

Future opportunities for analysis of outpatient follow up:

- Outpatient/same day procedure
- Consultation service compared to primary patients
- Incidental/asymptomatic

Additional possibilities for future innovation may be found in relation to identifying capabilities of the current EMR systems in relation to follow up.

**References**

- Meel, A. (2015). Transition of Care and Long-Term Surveillance in Vascular Surgery. *Vascular Surgery*, 28, Issue 2, 134-140.
- Lawrence, A. (2008). The Society for Vascular Surgery practice guidelines are followed after vascular surgery external procedures. *Journal of Vascular Surgery*, Vol 48, Issue 1, Page 1.

## Patient Safety and Teamwork

The data featured in the Patient Safety and Teamwork table was taken from the ACGME Resident Survey and captures information on transitions of care, culture of patient safety, reporting of patient safety events, and participation in adverse event analysis.

Patient Safety and Teamwork						
PROGRAM	ACGME Resident Survey (Reports only available for programs with 4 or more residents)					
	Information not lost during shift changes	Culture emphasizes patient safety	Know how to report patient safety events	Interprofessional teamwork skills modeled or taught	Participate in adverse event analysis	Process to transition care when fatigued
ACGME program data reported in % compliant responses. Due to the pandemic, national data was not provided by the ACGME for comparison.						
Dermatology	100%	100%	100%	83%	83%	83%
Emergency Medicine	100%	100%	100%	100%	80%	95%
Endocrinology	100%	100%	100%	100%	75%	100%
FCM - Carbondale	63%	68%	89%	53%	84%	100%
FCM - Decatur	87%	93%	93%	87%	87%	100%
FCM - Quincy	94%	88%	100%	88%	59%	100%
FCM - Springfield	73%	96%	92%	77%	65%	85%
Internal Medicine	63%	78%	100%	67%	80%	91%
Med/Psych	57%	100%	100%	86%	86%	86%
Neurological Surgery	100%	100%	100%	100%	100%	100%
Neurology	100%	91%	100%	82%	91%	91%
OB-GYN	81%	88%	100%	94%	81%	88%
Orthopaedics	87%	93%	93%	93%	87%	100%
Otolaryngology	100%	100%	100%	100%	89%	100%
Pediatrics	57%	81%	100%	86%	81%	100%
Plastic Surgery	100%	100%	100%	100%	92%	100%
Psychiatry	84%	100%	100%	89%	95%	100%
Pulmonary Disease	100%	80%	100%	40%	100%	100%
Radiology	100%	100%	100%	100%	92%	100%
Surgery	83%	89%	100%	83%	83%	100%
Urology	100%	100%	100%	100%	78%	100%
Vascular	100%	100%	100%	100%	100%	100%
All Programs/Institution	83%	90%	98%	84%	82%	96%

## Patient Safety & Health Care Quality

- 32 Residents & Fellows completed LEAN / Six Sigma training
- 82 Residents & Fellow participated in one of two Mock Root Cause Analysis (RCA) sessions held in October 2019 and March 2020
- 10 Residents & Fellows participated in one of eight hospital RCAs

## GME Professional Development

### PROGRAM COORDINATOR DEVELOPMENT TOPICS

- ACGME
- Annual Program Evaluation
- EHR Onboarding
- ERAS
- Exiting Residents
- J-1 Visas & Employment Authorization
- Medical Licensing
- Medicare / Medicaid enrollment
- Milestones, Case Logs, and CCC Meetings
- National Resident Matching Program
- New Innovations
- New Resident Orientation – GME & Program
- Physician Wellness
- Program Letters of Agreement
- Quality Improvement & Patient Safety Activities
- Record Keeping / Resident Files
- Recruitment
- Scheduling - Rotation and Conference
- Scholarly Activity
- WebADS Annual Update

### PROGRAM DIRECTOR DEVELOPMENT SESSIONS

- Leadership Development
- Embracing Your Alpha Self: The Art of Saying No
- Going Ape for APE and Self Studies
- The Good, the WebAD, and the Ugly: Do's and Don'ts for a Great WebADS Update

### RESIDENT/FELLOW LIVE SESSIONS & ONLINE MODULES

- Employment Contracts and Financial Planning
- Health Care Disparities Introduction
- Medical Legal Issues
- Patient Safety & Communication
- Professional Boundaries & Social Media
- Quality Improvement & Population Health
- Residents as Teachers
- Root Cause Analysis
- Sleep Deprivation & Fatigue Education
- Supervision of Residents
- Understanding Wellness, Stress, and Impairment in Physicians
- Workplace Violence Education

## New Resident / Fellow Orientation Overview

The majority of New Resident Orientation was conducted virtually in 2020 due to the COVID-19 pandemic and the restrictions on large gatherings.

- ACGME: Clinical Learning Environment, Clinical & Educational Work Hours, Competencies, Fatigue & Alertness, Milestones, Resident Wellness
- Basic Teaching Skills: Setting Expectations, Feedback & Clinical Teaching
- Electronic Health Record Training & Standards
- HIPAA
- Infection Control
- Introduction to Health Care Disparities & Cultural Competency
- Introduction to the Office of Equity, Diversity, & Inclusion
- OSHA
- Patient Safety Principles: Medical Error Reporting & Sources, Communication, Transitions of Care, Hand Washing, Local Patient Safety Initiatives
- Physician Burnout, Depression & Substance Misuse: Prevention, Recognition & Assistance
- Principles of Risk Management
- Professionalism: Patient Confidentiality, Physician-Patient Boundaries, E-Professionalism, Inclusion & Respect
- Supervision



The emphasis on equity, diversity, and inclusion within graduate medical education has been brought to the forefront over the past several years. The ACGME has several Common Program Requirements pertaining to equity, diversity, and inclusion within GME training programs.

**This is reflected in a sampling of the following requirements:**

- Section I.C. focuses on recruitment and retention of a diverse and inclusive workforce.
- Section V. addresses changing the collection of data regarding board pass rates from first time pass rates to ultimate board certification rates as a quality measure.
- Requirement VI.B.6. states that programs and Sponsoring Institutions must provide a professional, and respectful environment free from discrimination, harassment, mistreatment, abuse, or coercion.

**During this academic year, the following steps were taken to put more focus on EDI at SIU School of Medicine:**

- The School committed to striving to be an antiracist institution, establishing the Antiracism Taskforce: "We strive to be a just, fair, unbiased, and anti-racist organization." This core value was published with the 2020-2025 strategic plan.
- An institutional goal in 2019-2020 was to provide education to our GME program leadership on holistic review & recruitment of URM candidates. Data was provided to the training programs on their trainee composition.
- The Office of Graduate Medical Education works in partnership with the Associate Dean of Equity, Diversity, & Inclusion, Dr. Wendi Wills El-Amin, to educate and advocate within the GME community to expand the OEDI's outreach and to make trainees aware of their available resources to promote inclusiveness within the school.
  - The OEDI has several affinity groups and events that are open to the SIU GME Community: Alliance for Women in Medicine and Science, Global Health Program, Gay and Lesbian Medical Association, American Medical Women's Association, and a Black Lives Matter March and Townhall were held in June.
  - The House Staff Board will work with the OEDI in identifying an equity project to focus on next academic year.
  - There are many GME leaders and residents involved with the Equity Ambassador Program, which is a key multi-year longitudinal initiative that integrates a participatory research approach for building an antiracist institution. The purpose of this project is to actively engage with members of our community to critically reflect and activate change. Equity Ambassadors are key representatives identified through each department who share relevant information, lead difficult conversations, and increase departmental accountability around equitable environments.

Physician wellness has been a focus of the GMEC for many years at SIU School of Medicine. Resident, fellow, and faculty wellness gained a new level of importance this year with the high demands and challenges faced as a result of the COVID-19 pandemic. Here is a sampling of how our training programs practiced wellness throughout the past year. Please note that all of the featured activities on this page occurred prior to the pandemic.



## House Staff Board of Directors

The House Staff Board of Directors (HSBOD) is a group of residents that meets monthly to address issues pertaining to residency and the relationship residents have with each hospital and the School of Medicine. Each residency program nominates a primary and alternate delegate to represent them in the HSBOD. While only the representatives are able to vote, every resident is welcome to sit in on meetings.

Each year the board reviews the ACGME mid-year and end-of-year surveys to determine what changes may need to be made to improve the learning environment in Springfield. This information has proven useful in addressing the concerns of our residents and we have seen improvements in both the ACGME and SIU surveys.

COVID-19 has been the overarching theme of this academic year as we began July in the middle of the pandemic and a state-wide shutdown. SIU has done a tremendous job enacting policies to keep the residents safe and in good health during this time. Together with the hospitals the school has been receptive to feedback from the house staff and kept the wellbeing of its trainees at the forefront of coronavirus protection measures.

Over the past year we have continued our work with the Resident Resource Fund and annually have awarded approximately \$2500 to residents to help them manage expenses related to conference attendance, away rotations, research, and educational materials.

The HSBOD has always assisted new incoming residents with their institutional orientation, but this year was a little different with everything being virtual. As small gatherings become safer and we develop a better understanding of the virus we look forward to sponsoring more in-person resident events and continue to foster the culture of openness and camaraderie of SIU. Over the past several years I have been proud to work as part of the HSBOD and look forward to continuing to work this year on bettering the learning climate at SIU for all residents.

Breck Jones, MD  
Neurosurgery, PGY6  
President, House Staff Board of Directors



## Program Coordinators

The ACGME Common Program Requirements state that all training programs require a lead administrator to manage the operations of the program and liaise with learners, faculty, staff, and the ACGME. Individuals in this role are recognized by the ACGME as “program coordinators”. A coordinator is a “member of the leadership team and is critical to the success of the program”. A coordinator is expected to have skills in leadership and personnel management. They assist the program director in meeting accreditation requirements, educational programming, and supporting the trainees.

At SIU School of Medicine, these job titles vary, including Medical Education Program Coordinator, Medical Education Program Specialist, or the staff member might have a dual role with a title in the Office Support Series. No matter the civil service classification, these staff members are expected by the ACGME to fulfill the same job responsibilities in terms of accreditation. Program Coordinators at SIUSOM are not supervised centrally within the Office of Graduate Medical Education (OGME), so engagement in professional development and training requires a great deal of interdepartmental teamwork. This section is to recognize the tireless commitment and work put forth every day by the program coordinators at SIU School of Medicine. The institution is grateful for their dedication and partnership.



Cardiovascular Disease  
**Teri Rodawald**



Dermatology  
**Pamela Larson**



Emergency Medicine  
**Erin Mauzy**



Endocrinology  
**Carole Gibson**



Family & Community  
Medicine – Alton  
**Alison Witcher**



Family & Community /Sports  
Medicine –Carbondale  
**Keyoina Burkes**



Family & Community  
Medicine – Decatur  
**Tina Hartwig**



Family & Community  
Medicine – Quincy  
**Mary Ann Epley**



FCM Sports Medicine –  
Quincy  
**Linda Savage**



Hematology/Oncology  
**Kissindra Moore**



Infectious Diseases  
**Destiny Slater**



Internal Medicine  
**Cathy Brower**



Internal Medicine  
Megan Miner



Medicine / Psychiatry  
& Child Psychiatry  
Ruth Stark



Neurology  
Carolyn Higgason



Neurosurgery  
Stephanie George



**2020 Parker J. Palmer Courage to Lead Award - ACGME**

**Karen E. Broquet, MD, MHPE**, was chosen by the ACGME to be a recipient of the Courage to Lead Award. This national award honors “designated institutional officials (DIO) who have demonstrated excellence in overseeing graduate medical education programs at their Sponsoring Institutions.” Dr. Broquet was presented with this prestigious award at the annual international ACGME meeting held in San Diego, CA, in March 2020. Dr. Broquet has been the Associate Dean for GME for 19 years and has worked for the School for 32 years.



Obstetrics & Gynecology  
Lyn Vaughn



Orthopaedic Surgery/  
Adult Reconstruction  
Anita Weinhoeft



Otolaryngology  
Denean Vreeland



Pediatrics  
Jackie Ackerman



**2020 SIU School of Medicine Outstanding Coordinator Award – Graduate Medical Education**

**Linda Savage, Quincy Sports Medicine Fellowship Program Coordinator**, was chosen as the institution’s outstanding coordinator of the year. This award is open to all SIUSOM GME program coordinators or medical education specialists with at least one year in their role. Linda has been the Sports Medicine Coordinator since its inception 17 years ago and has worked at the School for 28 years. Linda earned this award through her leadership, exemplary work, and significant contributions to her program, department, and the GME team.



Pediatrics  
Annelisa Herter



Plastic and Hand Surgery  
Naya Jackson



Psychiatry  
Vivian Smith



Radiology  
Shannon Boxman



**2019 SIU School of Medicine Employee of the Year – Human Resources**

**Melissa Smock, General Surgery Residency Program Coordinator**, was chosen as the institution’s 2019 employee of the year. This award is open to all civil service and principal administrative employees at SIUSOM. The recipient of this award performs the responsibilities of their position in an exemplary manner, shows growth, takes initiative, uses sound judgement, and projects a positive attitude. Melissa has been the General Surgery Coordinator for over 1 year and has worked at the School for 14 years.



Surgery (General)  
Melissa Smock



Urology  
Barbara Robinson



Vascular and Colon  
& Rectal Surgery  
Rhonda Loyd

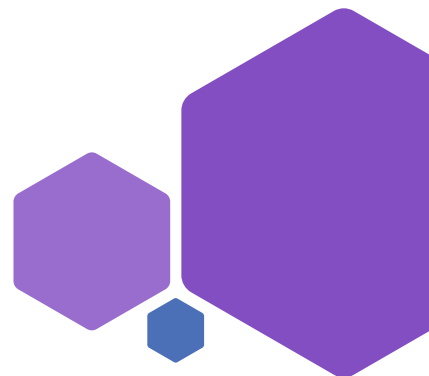


Not pictured:  
Pulmonary Disease  
Jacinda Burt



**2019 SIU School of Medicine Supervisor of the Year – Human Resources**

**Jennifer Rodgers, MS, C-TAGME, Director of Graduate Medical Education**, was chosen as the institution’s 2019 supervisor of the year. This award is open to all supervisors at SIUSOM. The recipient of this award must have made an outstanding contribution in a supervisory capacity to the organization. Jennifer has worked in the GME office and for the School for 10 years.



## National Leadership

In this section we recognize residents or faculty who held leadership positions such as Officer or Committee Chair in national or international organizations. Limited space does not permit us to include all of the individuals who served on national committees and teams.

### Child Psychiatry

#### Ayame Takahashi, MD

Co-Chair, Ginsberg Award Committee, American Association of Directors of Psychiatry Residency Training

### Colon & Rectal Surgery

#### Jan Rakinic, MD

Executive Committee Member, American Society for Colon and Rectal Surgery

### Dermatology

#### Brittany Blaise, MD

#### Emily Konopka, MD

Resident Liaison, Women's Dermatologic Society

### Family & Community Medicine – Quincy

#### Paula Mackrides, DO

Delegate, American Osteopathic Association House of Delegates; Governing Board Member, AT Still Osteopathic Post-Graduate Training Institute

### Family & Community Medicine – Springfield

#### Dae Hyoun Jeong, MD

International Federation Medical Officer of World Taekwondo (WT) & Pan American Taekwondo Union (PATU); International Federation Medical and Anti-Doping Officer of World Taekwondo (WT) for 2019 Tokyo Olympics and Paralympics Taekwondo Test Events

#### Harry Lausen, DO

Chair, Bureau of Osteopathic Education, American Osteopathic Association; Chair, Collegium of Fellows, Assembly of Osteopathic Graduate Medical Educators

#### Clasina Leslie Smith, MD

Chair, Communications Committee, Integrative Health Policy Consortium (IHPC)

### Hand Surgery

#### Michael Neumeister, MD

Chair, Plastic Surgery Resident Review Committee, Accreditation Council for Graduate Medical Education; Chair, Reconstruction Symposium and Trustee, American Association of Plastic Surgeons; AAHS Representative on ASPS/PSF Board of Directors, American Association for Hand Surgery; Advisory Council Member, Chair of Credentials & Requirements Committee, Senior Examiner, and Director, American Board of Plastic Surgery; Chair of Research Committee and Vice President of Finance & Communication, American Council for Academic Plastic Surgeons; Secretary and Vice President, American Society for Peripheral Nerve; Trustee Board Member, Midwestern Association of Plastic Surgeons; Medical Board Director, Musculoskeletal Transplant Foundation

### Infectious Diseases

#### Vidya Sundareshan, MD

Co-Chair, Diversity & Inclusion Committee, American Medical Women's Association; Infectious Diseases Milestone 2.0 Committee, Accreditation Council for Graduate Medical Education

#### Janak Koirala, MD

Lead, Nepal COVID response

### Internal Medicine

#### Edem Agamah, MD

Founder & President, International Health & Development Network

#### John Flack, MD

Member Board of Regents, American College of Physicians; Chair, American Heart Association Hypertension Professional Education and Publication Committee; Vice Chair, AHA HTN Professional and Public Education and Publications Committee; Leadership Committee, AHA Council on Hypertension

#### Susan Hingle, MD

Chair, Well-Being and Professional Fulfillment Committee, American College of Physicians; ACP Representative, National Academy of Medicine Action Collaborative on Clinician Well-Being and Resilience; Steering Committee, Wellness for Women through Equity and Leadership

#### Gary Rull, MD

Co-Chair, USMLE Ambulatory Test Material Development Committee at the National Board of Medical Examiners (NBME)

### Neurology

#### Rodger Elble, MD

Co-Chair, Tremor Study Group, International Parkinson and Movement Disorder Society

#### James Gilchrist, MD

Councillor, Association of University Professors of Neurology (AUPN)

#### Erin Hascup, PhD

Associate Editor, Journal of Alzheimer's Disease

### Obstetrics and Gynecology

#### Katherine Hild-Mosely, MD

Co-Chair, Membership Committee, International Society for the Study of Vulvovaginal Disease

#### Ricardo Loret de Mola, MD

Vice President & Member of the Board, The Latin-American Association of Reproductive Medicine (ALMER); Chair, Illinois Section of the American College of Obstetricians and Gynecologists (ACOG); District VI Advisory Council ACOG; Committee on Nominations, 1st Alternative, District VI ACOG

## National Leadership

#### Donald Torry, PhD

Chair, Awards Committee, American Society for Reproductive Immunology

### Orthopaedic Surgery

#### Norman Otsuka, MD

Chair, Education Assessments and Evaluation Committee, American Academy of Orthopaedic Surgeons

### Otolaryngology

#### Anna Flaherty, MD

Resident Representative (elected), Section for Residents and Fellows, American Academy of Otolaryngology – Head and Neck Surgery

#### Brendan Stack, MD

Section Editor, Evaluation of the Thyroid Mass British Medical Journal (BMJ) Best Practice Online Resource; Panelist & Co-Author, American Head & Neck Society (AHNS) SNMMI Appropriate Use Criteria for Nuclear Medicine in the Treatment and Diagnosis of Thyroid Cancer; Executive Committee, Asia Pacific Society for Thyroid Surgery; Vice Chair, Endocrine Section American Head and Neck Society; Chair, Editor in Chief Search Committee, Clinical Thyroidology and American Thyroid Association; Team Leader Endocrine Surgery, American Academy of Otolaryngology – HNS Annual Meeting Program Planning Committee; Chair, Publications Committee American Thyroid Association

#### Carol Bauer, MD

Past President, American Otological Society; Secretary General, Hearing International

### Pediatrics

#### Doug Carlson, MD

Chair, Credentials Committee, American Board of Pediatrics, Sub-Board on Pediatric Hospital Medicine

#### Michelle Miner, MD

Chair, Educational Technology Learning Community, Association of Pediatric Program Directors

## National Leadership

### Ezzeldin Saleh, MD

Co-founder, Trustee, Sudanese American Medical Association

### Plastic Surgery

### Nicole Sommer, MD

Chair, Continuing Education Committee Process Improvement Workgroup, American Council of Academic Plastic Surgeons (ACAPS); Treasurer, Midwestern Association of Plastic Surgeons; Co-Chair, Women in Academic Surgery Committee, ACAPS

### Psychiatry

### Jeffrey Bennett, MD

Area 4 Representative from Illinois to the American Psychiatry Association Assembly

### Karen Broquet, MD

Chair, Group on Resident Affairs Core Competency Committee, Association of American Medical Colleges

### Laura Shea, MD

Illinois Delegate, American Medical Association

### Sports Medicine – Quincy

### James Daniels, MD

Senior Editor, Sports Medicine In-Training Exam, American Medical Society of Sports Medicine; Executive Committee on Curriculum Change, Society of Teachers of Family Medicine

## Radiology

### Scott Long, MD, FACR

President, American College of Radiology, Illinois Chapter

## Surgery

### Stephen Hazelrigg, MD

Chair, Taskforce on New Technologies in Thoracic Surgery, Society of Thoracic Surgery

### John Mellinger, MD

Board of Directors, American Board of Family Medicine; Director, American Board of Surgery; Chair, General Surgery Residency Committee, American Board of Surgery; Co-Chair of Resident & Fellow Training Committee and 1st Vice President, Society of American Gastrointestinal and Endoscopic Surgeons; Board of Directors, Association of Program Directors in Surgery; Board of Trustees, Christian Medical and Dental Association

### Hilary Sanfey, MD

Chair, Association of Women Surgeons Foundation

## Urology

### Bradley Schwartz, DO, FACS

Chair, Education Committee North Central Section of the American Urological Association; Assistant Editor, Journal of Endourology; Editorial Board, Journal of Urology; Chief Editor, WebMD Urology; Editor, Current Pharmaceutical Design; Editor, eMedicine, Consumer Health Journal; Chair, Special Interest Group – Urology Robotic Surgery, Society of Laparoendoscopic Surgeons; Board of Directors, Society of Government Service Urologists

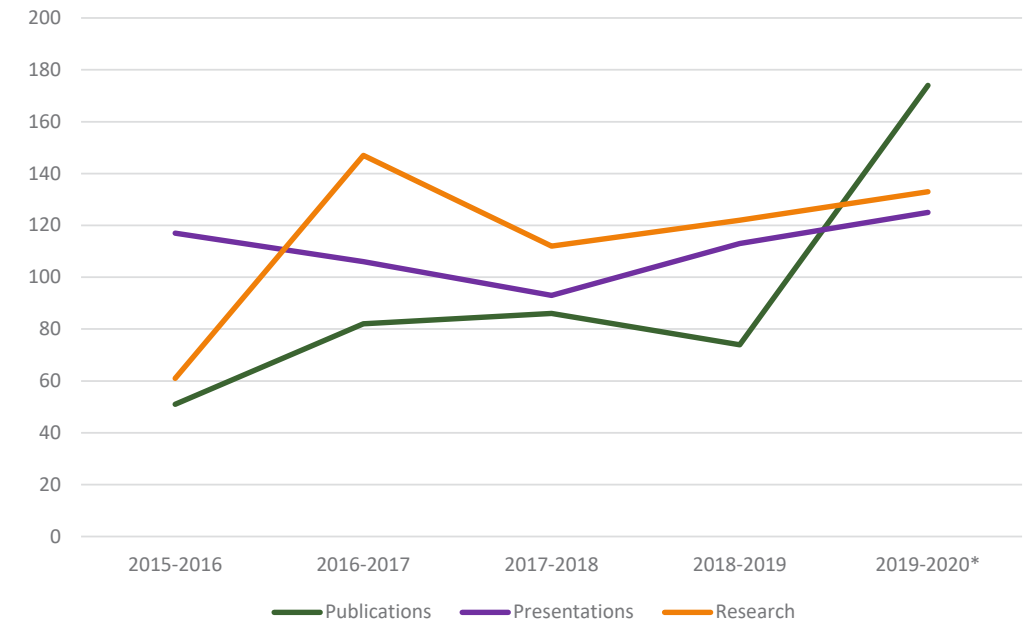
## Vascular Surgery

### Kim J. Hodgson, MD

President, Society for Vascular Surgery

## Publications, Presentations and Research

### Resident/Fellow Publications, Regional/National Presentations and Research Participation



\* As a result of the pandemic, many annual meetings and conferences were canceled from March to June 2020. For reporting purposes, if a poster or presentation was accepted, it is reflected in this section.

## PUBLICATIONS

### CARDIOLOGY – SEE ALSO INTERNAL MEDICINE

A Battisha, K Sawalha, AM Altibi, B Madoukh, **M Al-Akchar**, B Patel. Cardiogenic Shock in Autoimmune Rheumatologic Diseases: An Insight on Etiologies, Management, and Treatment Outcomes. Heart Failure Reviews, 1-9. June 20, 2020

**M Salih**, **AM Ibrahim**, **M Al-Akchar**, **M Bhattarai**, **C Koester**, M Ayan, A Hafiz. Complete Versus Culprit-Only Revascularization in Patients Presenting with ST-Segment Elevation Myocardial Infarction: A Meta-Analysis of Randomized Controlled Trials. Cardiovascular Revascularization Medicine. May 21, 2020

A Botchway, MG Buhnerkempe, V Prakash, **M Al-Akchar**, B Adekola, J Flack. Serious Adverse Events Cluster in Participants Experiencing the Primary Composite Cardiovascular Endpoint: A Post Hoc Analysis of the SPRINT Trial. American Journal of Hypertension 33 (6), 528-533. May 21, 2020

**M Salih**, Y Darrat, **AM Ibrahim**, **M Al-Akchar**, **M Bhattarai**, **C Koester**, M Ayan, M Labeledi, CS Elayi. Clinical Outcomes of Adjunctive Posterior Wall Isolation in Persistent Atrial Fibrillation: A Meta-Analysis. Journal of Cardiovascular Electrophysiology. April 9, 2020

A Battisha, K Sawalha, B Madoukh, O Sheikh, K Doughem, **M Al-Akchar**, M Al-Sadawi, S Shaikh. Acute Myocardial Infarction in Systemic Mastocytosis: Case Report with Literature Review of The Role of Inflammatory Process In Acute Coronary Syndrome. Current Cardiology Reviews. March 31, 2020

**M Al-Akchar**, **AM Ibrahim**, **N Tandan**, K Sawalha, V Prakash, M Salih, S Goel, N Goswami, Z Fanari. Comparison of outcomes of patients with cardiomyopathy undergoing transcatheter aortic valve replacement: ischemic vs. Non-ischemic. Journal of the American College of Cardiology 75 (11 Supplement 1), 1420. March 24, 2020

**M Al-Akchar**, **AM Ibrahim**, **N Tandan**, H Mahmalji, **M Bhattarai**, N Goswami, S Goel, Z Fanari. Comparison of outcomes in patients undergoing transcatheter aortic valve replacement: reduced ejection fraction vs. Mid-range ejection fraction. Journal of the American College of Cardiology 75 (11 Supplement 1), 1419. March 24, 2020

**M Al-Akchar**, **M Bhattarai**, **M Salih**, **T Zhang**, D Hood, A Kulkarni, AM Hafiz. Vascular access for percutaneous left ventricular assist device (plvad) in fem-fem bypass. Journal of the American College of Cardiology 75 (11 Supplement 1), 3173. March 24, 2020

**M Salih**, M Ayan, **M Al-Akchar**, **M Bhattarai**, AM Hafiz. Comparison of ticagrelor versus prasugrel in patients with acute coronary syndrome: a meta-analysis of randomized controlled trials. Journal of the American College of Cardiology 75 (11 Supplement 1), 234. March 24, 2020

**M Al-Akchar**, K Sawalha, H Mahmalji, **AM Ibrahim**, **M Salih**, **M Bhattarai**, S Nandish, S Goes, N Goswami, JA Goldstein, Z Fanari. Echocardiographic Derived Parameters Association with Long Term Outcomes After Transcatheter Valve Replacement. Cardiovascular Revascularization Medicine. January 7, 2020

V Prakash, MG Buhnerkempe, A Botchway, B Adekola, **M Al-Akchar**, J Flack. Abstract P2070: Renal, Cardiovascular, And Mortality Impacts Of Refractory Hypertension In Patients With Chronic Kidney Disease: Insights From The Chronic Renal Insufficiency. Hypertension 74 (Suppl\_1), AP2070-AP2070. September 30, 2019

A Botchway, MG Buhnerkempe, V Prakash, **M Al-Akchar**, O Adekola, J Flack. Abstract P2054: Experiencing the Primary Composite Cardiovascular Outcome is More Strongly Associated With Serious Adverse Events Than Intensive Treatment in the Systolic Blood. Hypertension 74 (Suppl\_1), AP2054-AP2054. September 30, 2019

MG Buhnerkempe, A Botchway, V Prakash, **M Al-Akchar**, CEN Morales, D Calhoun, J Flack. Prevalence of refractory hypertension in the United States from 1999 to 2014. Journal of hypertension 37 (9), 1797-1804. September 1, 2019



## Publications, Presentations and Research

**Maini R, Regmi MR, Tandan N, Parajuli P, Garcia OL.** "Dyspnea in Acute Myeloid Leukemia – An Uncommon Presentation of Diffuse Alveolar Hemorrhage." Archives of Clinical and Medical Case Reports. June 2020. doi: 10.26502/acmcr.96550242.

**Maini R, Regmi MR, Tandan N, Parajuli P, Garcia OL, Ullah S, Song M.** "A Bird Tale's: A Case of Acute Eosinophilic Pneumonia." Archives of Clinical and Medical Case Reports. June 2020. doi:10.26502/acmcr.96550245.

**Maini R, Regmi MR, Tandan N, Parajuli P, Garcia OL, Zaidi F, Khan Aziz.** "Primary Conjunctival Follicular Lymphoma: A Case Report and Literature Review" Oncology Case Reports Journal. 2020, Jun; 3(2): 1-4.

**Maini R, Tandan N, Day J, Zaidi F, Hannan A, Goel R.** "Perioperative Red Blood Cell Transfusions Are Associated With Increased Postoperative Sepsis And Mortality: Evidence From a Multi-Institute Prospective North American Registry." Vox Sanguinis. Publishing December 2020.

**Maini R, Tandan N, Ibrahim A, Desai M.** "A Rare Case of Langerhans Cell Histiocytosis of the Lung and Thyroid Lymphoma in a Young Adult." October 2019, Chest 2019;156(4):A1965. doi: 10.1016/j.chest.2019.08.1949.

**Maini R, Tandan N, Regmi M, Parajuli P, Garcia OL, Al-Akchar M.** A Difficult Case of Constrictive Pericarditis Due to Rheumatoid Arthritis. Journal of the American College of Cardiology. 2020 Mar 24;75(11 Supplement 1):3334. DOI: 10.1016/S0735-1097(20)33961-9

**Maini R, Tandan N, Regmi MR, Parajuli P, Lara Garcia OE, Koester C, Cheema A, Sahib H, Mirihagalle N, Abedrabo S, Niaz Z, Ibrahim AM, Bhandari B, Johnson A, Delfino K, Robinson K, Desai MR, Kulkarni A.** "Survival and cardiac outcomes in elderly individuals with breast cancer: A retrospective study from an academic center." J Clin. Oncol. May 2020;38(15):e13620. doi: 10.1200/JCO.2020.38.15\_suppl.e13635 Journal of Clinical Oncology

**Parajuli P, Garcia OEL, Maini R, Regmi MR, Tandan N, Mirihagalle N, Cheema A, Abedrabo S, Niaz Z, Koester C, Sahib H, Bhandari B, Johnson A, Ibrahim A, Delfino K, Robinson K, Desai M, Kulkarni A.** Survival outcomes in post-menopausal patients with underlying cardiovascular disease receiving endocrine therapy for the treatment of breast cancer. ASCO May 2020. DOI: 10.1200/JCO.2020.38.15\_suppl.e12529

**Parajuli P, Ibrahim AM, Siddiqui HH, Lara Garcia OE, Regmi MR.** Trimethoprim-sulfamethoxazole Induced Pancytopenia: A Common Occurrence but A Rare Diagnosis. Cureus. 2019 Jul 2;11(7):e5071. doi: 10.7759/cureus.5071. PMID: 31516782; PMCID: PMC6721910.

**Parajuli P, Lara Garcia OE, Maini R, Regmi MR, Tandan N, Mirihagalle N, Cheema A, Abedrabo S, Niaz Z, Koester C, Sahib H, Bhandari B, Johnson A, Ibrahim AM, Delfino K, Robinson K, Desai MR, Kulkarni A.** Survival outcomes in post-menopausal patients with underling cardiovasuar disease receiving endocrine therapy for the treatment of breast cancer. Journal of Clinical Oncology 38(15 suppl) e12549-e12549.

**Parajuli P, Lara-Garcia OE, Regmi MR, Skoza W, Bhattarai M, Kulkarni A, Robinson RL.** Heart Failure Drug Class Effects on 30-Day Readmission Rates in Patients with Heart Failure with Preserved Ejection Fraction: A Retrospective Single Center Study. Medicines (Basel). 2020 May 20;7(5):30. doi: 10.3390/medicines7050030. PMID: 32443705; PMCID: PMC7281589.

**Parajuli P, Regmi MR, Lara-Garcia OE, Maini R, Bhattarai M, Deckard A, Kulkarni, A.** Elevated Troponin- Is it Time to Consult A Cardiologist? A Case Series with Review of the Literature. Cardiology and Cardiovascular Medicine 4 (June 2020): 268-277.

**Parajuli P, Regmi M, Lara-Garcia OE, Doud D, Garg A, Singla I.** Dobutamine Stress Echocardiogram (Dse) Induced Takotsubo Syndrome: A Rare Complication of A Common Non-Invasive Diagnostic Test. Journal of the American College of Cardiology. 2020 Mar 24;75(11 Supplement 1):29082020 DOI: 10.1016/S0735-1097(20)33535-X

**Parajuli P, Regmi M, Lara-Garcia OE, Maini R, Doud D.** Lipomatous Mass Of the Limbus Portion Of The Atrial Septum-An Unusual Cause Of Dyspnea. Journal of the American College of Cardiology. 2020 Mar 24;75(11 Supplement 1):2872. DOI: 10.1016/S0735-1097(20)33499-9

**Parajuli P, Regmi MR, Maini R, Lara Garcia OE, Tandan N, Mirihagalle N, Cheema A, Abedrabo S, Niaz Z, Koester C, Sahib H, Bhandari B, Johnson A, Ibrahim AM, Delfino K, Robinson K, Desai MR, Kulkarni A.** "Development of cardiac events in postmenopausal breast cancer patients treated with Aromatase inhibitor (AI) and selective estrogen receptor modulator (SERM)." J. Clin. Oncol. May 2020;38(15):e12529. DOI: 10.1200/JCO.2020.38.15\_suppl.e12529 Journal of Clinical Oncology 38, no. 15\_suppl

**Ranjha S, Ali M, Al-Bast B, Song M.** A Rare Case of Risperidone Overdose Causing Angioedema. Critical Care Medicine, January 2020, 48 (1), 264.

**Regmi MR, Bhandari B, Koirala J.** Fibrosing Mediastinitis Due to Histoplasma Causing Pulmonary Hypertension. Chest. 2019 Oct 1;156(4): A1352. DOI: 10.1016/j.chest.2019.08.1212

**Regmi MR, Bhattarai M, Parajuli P, Garcia OEL, Tandan N, Ferry N, Cheema A, Chami Y, Robinson R.** Heart Failure with Preserve Ejection Fraction (HFpEF) and 30-Day Readmission. Clin Med Res. 2020 Apr 27;cmr.2020.1521. doi: 10.3121/cm.2020.1521. Epub ahead of print. PMID: 32340982.

**Regmi MR, Carbrey SA, Parajuli P, Lara Garcia OE, Bhattarai M.** A Rare Case of Isolated and Idiopathic Spontaneous Renal Artery Dissection in a Female Patient on Multiple Medications. Cureus. 2019 Sep 26;11(9):e5770. doi: 10.7759/cureus.5770. PMID: 31723529; PMCID: PMC6825480.

**Regmi MR, Garcia OE, Parajuli P, Madrid O, Hafiz AM.** Late Atrial Thrombus Formation after Percutaneous Patent Foramen Ovale Closure. JACC: Case Reports. 2020 Apr 15;2(4):636-40. DOI: 10.1016/j.jaccas.2020.01.010

**Regmi MR, Limon IA, Parajuli P, Garcia OL, Hafiz B, Siddique M.** Recurrent Chest Pain-An Unusual Presentation of a Common Disease. Journal of the American College of Cardiology. 2020 Mar 24;75(11 Supplement1) :2656. DOI: 10.1016/S0735-1097(20)33283-6

**Regmi MR, Maini R, Parajuli P, Tandan N, Garcia OEL, Ullah S, Stone T, Song M.** "An Aggressive Progression of a Lung Mass: A Rare Case Report of Sarcomatoid Carcinoma". European Journal of Medical Case Reports. May 2020 4(5): 177-179 http://dx.doi.org/10.24911/ejmcr/173-1587181663.

**Regmi MR, Parajuli P, Cheema A, Garcia OEL, Tandan N, Maini R, Sahib H, Mirihagalle N, Koester C, Niaz Z, Abedrabo S, Johnson A, Ibrahim A, Bhandari B, Delfino K, Robinson K, Desai M, Kulkarni A.** Effects of Cardioprotective Medications on Breast Cancer Survival: A Retrospective Study from an Academic Center from Southern Illinois. May 25, 2020 ASCO 2020 DOI: 10.1200/JCO.2020.38.15\_suppl.e12540

**Regmi MR, Parajuli P, Garcia OL, Maini R, Siddique M.** Wellen's Syndrome Is Not Always Coronary Artery Disease: A Rare Finding in Pulmonary Embolism. Journal of the American College of Cardiology. 2020 Mar 24;75(11 Supplement 1):2755. DOI: 10.1016/S0735-1097(20)33382-9

**Regmi M, Rehman A.** Familial Hyperlipidemia Type 1. InStatPearls [Internet] 2019 Nov 17. StatPearls Publishing. PMID: 31869119

**Regmi M, Siccardi MA.** Coronary Artery Disease Prevention. InStatPearls [Internet] 2019 Sep 24. StatPearls Publishing. PMID: 31613540

**Regmi MR, Tandan N, Parajuli P, Maini R, Lara Garcia OE, Jagtap P, Kulkarni A.** Extracorporeal membranous oxygenation for a severe case of vaping associated lung injury. Pulmonology. 2020 Jun 4;S2531-0437(20)30125-2. doi: 10.1016/j.pulmoe.2020.05.008. Epub ahead of print. PMID: 32507701.

## Publications, Presentations and Research

Dandapat S, Samaniego EA, Szeder V, Siddiqui FM, Duckwiler GR, **Ume KL, Guerrero WR, Zheng B, Hasan D, Derdeyn C, Ortega-Gutierrez S.** Safety and efficacy of the use of large bore intermediate suction catheters alone or in combination for the treatment of acute cerebral venous sinus thrombosis: A multicenter experience. Interv Neuroradiol. 2019 Jul 31;1591019919865957.

### NEUROSURGERY – ALSO SEE SURGERY

**Nordmann NJ, Michael AP, Espinosa, JA.** Resolution of Symptomatic Lumbar Synovial Cyst After Traumatic Event. World Neurosurg. 2019 Aug. 128;67-71. doi:10.1016/j.wneu.2019.04.091 Epub.2019 Apr 30. PMID 31051307

**Watson VL, Cozzens JW.** Use of 5-Aminolevulinic Acid for Confirmation of Lesional Biopsy Sample in Presumed High Grade Glioma. World Neurosurg. 2019 Dec: 132:21-25 doi:10.1016/j.neu.2019.08.076. Epub 2019 Aug 20. PMID 31442649

**Michael AP, Kast RE, Sardi I, Burns TC, Heiland T, Karpel-Massier G, Kamer FG, Halatsch ME.** A New Treatment Opportunity for DIPG and Diffuse Midline Gliomas: 5-ALA Augmented Irradiation, The Saai Regimen. Brain Sci. 2020 Jan. 17;10(1):51.doi:10.3390/brainsci10010051. PMID 31963414

### OB-GYN

Soletys SM, Scherbel JR, Kurian JR, **Diebold T, Wilson T, Hedden L, Groesch K, Diaz-Sylvester P, Botchway A, Campbell P, Loret de Mola JR.** The Association of Perinatal Synthetic Oxytocin Dosing and the Odds of Developing Autism. Autism. doi: 10.1177/1362361320902903. PMID: 32054311. February 2020

### ORTHOPAEDICS – SEE ALSO PLASTIC SURGERY

Donally III CJ, **DiPompeo CM, Varacallo M.** Vertebral Compression Fractures. 2020 Mar 25. In: StatPearls [Internet]. Treasure Island (FL): StatPearls Publishing 2020 – Jan. PMID 28846351

**Blank KD, Otsuka NY.** Pediatric Pain Management in Plastic Surgery. Clin Plastic Surg 47 (2020) 215-219. PMID 32115048.

**Tapscott DC, Varacallo M.** "Suprspinatus Tendonitis". [Internet]. Treasure Island (FL): StatPearls Publishing; 2020 Jan-2019 Dec 17. PMID 31869166.

**Mitchelson AJ, Maender CW.** "Hand Amputation" StatPearls [Internet]. Treasure Island (FL): StatPearls Publishing 2019 Dec 16. PMID 31869156

Varacallo, **Tapscott DC, Mair SD.** "Superior Labrum Anterior Posterior (SLAP) Lesions". StatPearls [Internet] Treasure Island (FL): StatPearls Publishing; 2020 Jan-2019 Dec 11. PMID 30855868.

**Tapscott DC, Benham MD.** "Sternoclavicular Joint Infection" StatPearls [Internet]. Treasure Island (FL): Stat Pearls Publishing; 2020 Jan-2019 Dec. 4. PMID31869185.

Cianciolo AT; Hingle S, Hudali T, **Beason AM.** "Evaluating Clerkship Competency Without Exams" Clin Teach 2019 Dec 2. PMID 31789487

Schroeder GD, McKenzie JC, Casper DS, Mangan JJ, Stull J, Kepler CK, Nicholson KJ, Kurd ME, Hildebrand AS, **Murphy H, Wood BI, Radcliff KE, Anderson DG, Vaccro AR, Rihn JA.** "Does an Uninstrumented Level Increase the Rate of Revision Surgery in a Multilevel Posterior Cervical Decompression and Fusion?" Clin Spine Surg. 2019 Dec: 32(10):E416-E419. PMID 31789896

Hadeed A, **Tapscott DC.** "Iliotibial Band Friction Syndrome". StatPearls [Internet]. Treasure Island (FL): StatPearls Publishing; 2020 Jan-2019 Nov 18.

**Beason AM, Hitt CE, Ketchum J, Rogers H, Sanfey H.** "Verification of Proficiency in Basic Skills for PGY-1 Surgical Residents: 10 Year Update". J Surg Educ. 2019 Nov-Dec:76(6)e217-e224. PMID 31522995.





## Publications, Presentations and Research

**Mohammad Al-Akchar, MD** – Poster Presentation accepted for ACC.20 World Congress of Cardiology in March 28-30, 2020 in Chicago, Illinois. “Serious Adverse Events Cluster in Participants Experiencing the Primary Composite Cardiovascular Endpoint: A Post-Hoc Analysis of the SPRINT Trial.” Canceled due to COVID

**Mohammad Al-Akchar, MD** – Poster Presentation accepted for ACC.20 World Congress of Cardiology in March 28-30, 2020 in Chicago, Illinois. “Echocardiographic derived parameters association with long term outcomes after transcatheter valve replacement.” Canceled due to COVID

**Mohammad Al-Akchar, MD** – Poster Presentation accepted for ACC.20 World Congress of Cardiology in March 28-30, 2020 in Chicago, Illinois. “HOSPITAL Score, LACE Index and LACE+ Index as predictors of 30-day readmission in patients with heart failure.” Canceled due to COVID

**Mohammad Al-Akchar, MD** – Poster Presentation accepted for ACC.20 World Congress of Cardiology in March 28-30, 2020 in Chicago, Illinois. “Meta-analysis evaluating outcomes of surgical left atrial appendage occlusion during cardiac surgery.” Canceled due to COVID

**Mohammad Al-Akchar, MD** – Poster Presentation accepted for ACC.20 World Congress of Cardiology in March 28-30, 2020 in Chicago, Illinois. “Looking Beyond the Obvious Cardiac Amyloidosis.” Canceled due to COVID

**Mohammad Al-Akchar, MD** – Poster Presentation accepted for ACC.20 World Congress of Cardiology in March 28-30, 2020 in Chicago, Illinois. “Abstract P2070: Renal, Cardiovascular, And Mortality Impacts Of Refractory Hypertension In Patients With Chronic Kidney Disease: Insights From The Chronic Renal Insufficiency ...” Canceled due to COVID

**Mohammad Al-Akchar, MD** – Poster Presentation accepted for ACC.20 World Congress of Cardiology in March 28-30, 2020 in Chicago, Illinois. “Abstract P2054: Experiencing the Primary Composite Cardiovascular Outcome is More Strongly Associated With Serious Adverse Events Than Intensive Treatment in the Systolic Blood ...” Canceled due to COVID

**Mohammad Al-Akchar, MD** – Poster Presentation accepted for ACC.20 World Congress of Cardiology in March 28-30, 2020 in Chicago, Illinois. “Prevalence of refractory hypertension in the United States from 1999 to 2014.” Canceled due to COVID

**Mohammad Al-Akchar, MD** – Poster Presentation accepted for ACC.20 World Congress of Cardiology in March 28-30, 2020 in Chicago, Illinois. “Rhythm, QT Prolongation.” Canceled due to COVID

**Mohammad Al-Akchar, MD** – Poster Presentation accepted for ACC.20 World Congress of Cardiology in March 28-30, 2020 in Chicago, Illinois. “A Rare Cause of Shortness of Breath in an Adult: Discrete Subaortic Membrane.” Canceled due to COVID

**Mohammad Al-Akchar, MD** – Poster Presentation accepted for ACC.20 World Congress of Cardiology in March 28-30, 2020 in Chicago, Illinois. “General anesthesia versus conscious sedation in transcatheter aortic valve replacement: experience from a growing structural cardiology program in the Midwest.” Canceled due to COVID

### CHILD PSYCHIATRY

**Nibras S.** “Psychopharmacology in complex medically ill youth: What is the role of antipsychotics?” Presentation for the American Academy of Child and Adolescent Psychiatry (AACAP) (Chicago, October 2019).

**Nibras S, Sharma V, Sharma A, Takahashi A.** “Trainee community outreach to educate high school students about anxiety, depression, and suicide poster.” Poster accepted at American Psychiatric Association (APA) (Philadelphia, April 2020). Conference cancelled due to COVID-19.

**Nibras S, Wolf K.** “Evaluating a medical educator track (MET) in Psychiatry at Southern Illinois University: One year post-implementation.” Poster accepted at the American Association of Directors of Psychiatric Residency Training (AADPRT) (Dallas, March 2020).

**Shenoy S, Nibras S, Udaya-Shankar J.** “The ripple effect: children of the opioid epidemic and the need for wraparound services.” Poster accepted at American Psychiatric Association (APA) (Philadelphia, April 2020). Conference cancelled due to COVID-19.

### COLORECTAL SURGERY

**McGee, G MD** E-Poster w/ Recorded Audio Presentation - Risk Factors Associated with Poor Outcomes on Enhanced Recovery Protocol for Colon and Rectal Surgery (ASCRS Meeting - In person meeting was cancelled due to COVID) May 2020

### DERMATOLOGY

**Berry A, Song B, Stone S, Wilson M.** “The Imipramine Blues: clinicopathologic findings in an uncommon pigmentary disorder” Annual Meeting of the American Society of Dermatopathology, October 2019

**Frey A, Song B, Larson R, Wilson M.** “Rare Case of Pleomorphic Cutaneous Squamous Cell Carcinoma with Monster Cells” Annual Meeting of the American Society of Dermatopathology, October 2019

### EMERGENCY MEDICINE

Connor Stephenson MS3; Jonathan dela Cruz MD; Kristin Delfino PhD; Danuta Dynda MD, MBA; James Waymack MD; Chinmay Patel DO; **James Hart MD.** Comparing Procedural and Patient Exposure of Medical Student Rotations at Rural and Metropolitan Emergency Departments. Abstract: SAEM Great Plains Conference. Springfield, IL. September 2019. Abstract.

### ENDOCRINOLOGY

**Vanessa Williams, Mohammad Ansari, Amruta Jaju, Stacey Ward, Daniel O’Keefe, Jumana Abdelkarim, Nicole Montes, Ula Tarabichi, Albert Botchway, Michael Jakoby.** Impact of Perioperative Dexamethasone on Hospital Length of Stay and Glycemic Control for Patients with Type 2 Diabetes Mellitus Undergoing Total Hip Arthroplasty. EMBRAACE 2020, the American Association of Clinical Endocrinologists Annual Scientific Session and Clinical Congress, May 7-10, 2020, Washington, DC (accepted for presentation, meeting canceled due to Covid-19 pandemic)

**Vanessa Williams, Michael Jakoby, Hadoun Jabri.** Response to Burosamab in an Adult with X-Linked Hypophosphatasia. EMBRAACE 2020, the American Association of Clinical Endocrinologists Annual Scientific Session and Clinical Congress, May 7-10, 2020, Washington, DC (accepted for presentation, meeting canceled due to Covid-19 pandemic)

**Amruta Jaju, Michael Jakoby.** Primary Carnitine Deficiency Caused by Compound Heterozygosity for SLC22A5 Mutations and a Novel Mutation. EMBRAACE 2020, the American Association of Clinical Endocrinologists Annual Scientific Session and Clinical Congress, May 7-10, 2020, Washington, DC (accepted for presentation, meeting canceled due to Covid-19 pandemic)

**Amruta Jaju, Laura Rehab, Hadoun Jabri, Mariam Murtaza-Ali, Sanobar Parveen, Anis Rehman, Michael Jakoby.** Acute Onset Type 1 Diabetes Mellitus Caused by the Checkpoint Inhibitor Pembrolizumab. EMBRAACE 2020, the American Association of Clinical Endocrinologists Annual Scientific Session and Clinical Congress, May 7-10, 2020, Washington, DC (accepted for presentation, meeting canceled due to Covid-19 pandemic)

**Romana Kanta, Mohammad Ansari, Mariam Murtaza-Ali, Anis Rehman, Hadoun Jabri, Sanobar Parveen, Michael Jakoby.** Humoral Hypercalcemia of Malignancy Caused by Squamous Cell Carcinoma of the Penis. ENDO 2020 (The Endocrine Society’s 102nd Annual Meeting and Expo), March 28-31, 2020, San Francisco, CA (accepted for presentation and Travel Grant award winner, meeting canceled due to Covid-19 pandemic)

**Romana Kanta, Mohammad Ansari, Mariam Murtaza-Ali, Anis Rehman, Hadoun Jabri, Sanobar Parveen, Pardis Javadi, Arun Sharma, Michael Jakoby.** Venous Thromboembolism Caused by Primary Hyperparathyroidism. ENDO 2020 (The Endocrine Society’s 102nd Annual Meeting and Expo), March 28-31, 2020, San Francisco, CA (accepted for presentation, meeting canceled due to Covid-19 pandemic)

**Mohammad Ansari, Mahreen Ahmed, Mariam Murtaza-Ali, Anis Rehman, Hadoun Jabri, Sanobar Parveen, Michael Jakoby.** Acute Onset Type 1 Diabetes Mellitus Caused by the Checkpoint Inhibitor Nivolumab. ENDO 2020 (The Endocrine Society’s 102nd Annual Meeting and Expo), March 28-31, 2020, San Francisco, CA (accepted for presentation, meeting canceled due to Covid-19 pandemic)

**Mohammad Ansari, Jumana Abdelkarim, Mariam Murtaza-Ali, Anis Rehman, Hadoun Jabri, Sanobar Parveen, Shailesh Baral, Michael Jakoby.** Resolution of a Cystic Macroprolactinoma with Dopamine Agonist Therapy. ENDO 2020 (The Endocrine Society’s 102nd Annual Meeting and Expo), March 28-31, 2020, San Francisco, CA (accepted for presentation, meeting canceled due to Covid-19 pandemic)

*The four posters listed below were included in an AACE online national poster session May 11, 2020:*

**Vanessa Williams, Mohammad Ansari, Amruta Jaju, Stacey Ward, Daniel O’Keefe, Jumana Abdelkarim, Nicole Montes, Ula Tarabichi, Albert Botchway, Michael Jakoby.** Impact of Perioperative Dexamethasone on Hospital Length of Stay and Glycemic Control for Patients with Type 2 Diabetes Mellitus Undergoing Total Hip Arthroplasty.

**Vanessa Williams, Michael Jakoby, Hadoun Jabri.** Response to Burosamab in an Adult with X-Linked Hypophosphatasia.

**Amruta Jaju, Michael Jakoby.** Primary Carnitine Deficiency Caused by Compound Heterozygosity for SLC22A5 Mutations and a Novel Mutation.

**Amruta Jaju, Laura Rehab, Hadoun Jabri, Mariam Murtaza-Ali, Sanobar Parveen, Anis Rehman, Michael Jakoby.** Acute Onset Type 1 Diabetes Mellitus Caused by the Checkpoint Inhibitor Pembrolizumab.

### FAMILY & COMMUNITY MEDICINE – QUINCY

**Leung H.** (2020, March). An Unusual Presentation of Embryonal Carcinoma. Poster session presented at the annual meeting of the American College of Osteopathic Family Physicians, New Orleans, LA.

### FAMILY & COMMUNITY MEDICINE – SPRINGFIELD

**Hui, Jason.** Workshop Presentation, Point-of-Care Ultrasonography in a Weight Lifter with Suspected Rupture of Pectoralis Major Insertion. 7th World Congress of Ultrasound in Medical Education 2019, UC Irvine, Irvine, CA. Student Center, University of California Irvine (UCI), Irvine, CA. September 14th 2019

**Berg, Ethan; Cong, Lana; Oesterling, Ben.** Virtual Poster Presentation What does our frontline staff know about osteopathic manipulative medicine. ACOFP70, April 14, 2020

### INFECTIOUS DISEASES – SEE ALSO INTERNAL MEDICINE

Comparative In-vitro Study of Susceptibilities of Eravacycline, Tigecycline, and Minocycline against VRE **Francine Chua, Sara Nida, Vidya Sundareshan,** American Society of Microbiology, April, 2020

## Publications, Presentations and Research

Comparative In-vitro Study of Susceptibilities of Eravacycline, Tigecycline, and Minocycline against Multidrug Resistant *Acinetobacter baumannii*. U.Chapagain, **N. Pervin, M. Stumpf, V.Sundareshan** Presented at Midwest Clinical & Translational Research Meeting of Central Society for Clinical and Translational Research (CSCTR) and Midwestern American Federation for Medical Research (MWAfMR), Chicago, IL 2019

**M Chua** “Cladophialophora bantiana Brain Abscess and Voriconazole-Induced Fluorosis and Periostitis Deformans/” Accepted as one of the top 15 cases during the national Infectious Diseases Society of America (IDSA) “Interesting Cases Submitted During the ID Week Call for Cases” poster session, Washington D.C., October 2019.

### INTERNAL MEDICINE - SEE ALSO CARDIOLOGY, ENDOCRINOLOGY AND PULMONARY DISEASE

**Ali M, Nayeemuddin F, Ranjha S.** A Rare Case of Endobronchial Blastomycosis. Chest Annual Meeting, New Orleans, 10/22/2019.

**Ali M., Ullah S., Fagg J., Song M.** Incidental Lung Mass Presenting as Cryptococcoma. Chest Annual Meeting, New Orleans. October 2019. New Orleans, LA.

**Alvarez V. Kyaw P, White P.** We looked for it, we found it, we lost it: Case study if a non- expandable lung. American Thoracic Society, Philadelphia, May 2020.

**Amruta J, Rehab L, Jabri H, Murtaza-Ali M, Parveen S, Rehman A, Jakoby M.** Acute Onset Type 1 Diabetes Mellitus Caused by the Checkpoint Inhibitor Pembrolizumab. American Association of Clinical Endocrinologist (AACE) online national poster session May 11, 2020

**Cheema A, McCarty R, Waqar S.** (2020). Unintended Consequences of Gardening: Cutaneous Nocardia Brasiliences. American College of Physicians, Los Angeles, CA, United States. (April 2020, Conference canceled)

**Cancel, M.** “Clinical examination vs brain imaging in a case of brain death: a physician’s dilemma. Resident case report posters. CHEST Annual Meeting October 23, 2019, New Orleans, LA

**Cancel M, Sartawi T, Ullah S, Sreedhar R.** Clinical Examination vs Imaging in a case of Brain Death: a Physician’s Dilemma. Chest Annual Meeting, New Orleans. October 23, 2019. New Orleans, LA.

**Fagg, J. Ali, M. Sartawi, T. Nayeemuddin F, Sreedhar, R.** An Alternative Cause of Hemoptysis: Microscopic Polyangiitis. Chest Annual Meeting, New Orleans. October, 2019. New Orleans, LA.

**Fagg, J. Stone, T. Sartawi, T. Zaza T.** Sarcoma of the Great Vessels Masquerading as Pulmonary Embolism. Chest Annual Meeting, New Orleans. October, 2019. New Orleans, LA.

**Ibrahim A, Ali M, Tandan N, Al-Bast B, Kulkarni A.** “Ischemic Stroke in a Patient with A Watchman Device; What’s A Leak Got To Do With It?” Chest Annual Meeting, New Orleans. October, 2019. New Orleans, LA. Chest 2019;156(4):A710. doi: 10.1016/j.chest.2019.08.686

**Ibrahim, A.M., Koester, C., Tandan, N., Al-Akchar, M., Hafiz, A.M.** (September, 2019). Successful use of “Bi-Pella” mechanical circulatory support and IABP in a patient with STEMI, biventricular failure and cardiogenic shock. Poster presented at: Transcatheter Cardiovascular Therapeutics Conference, September 2019, San Francisco, CA.

**Ibrahim AM, Tandan N, Niaz Z, Al-Akchar M, Goswami NJ.** “Successful Coil Embolization of Fistula Between Left Anterior Descending Coronary Artery and the Pulmonary Artery. American College of Cardiology National Meeting, virtual presentation, March 2020. Journal of the American College of Cardiology JACC 2020;75(11):3058. doi: 10.1016/S0735-1097(20)33685-8 Virtual presentation March 2020

**Koester, C., Ibrahim, A.M., Bhandari, B.,** Labedi, M., Kulkarni, A. (March, 2020). When Occam's Razor Fails: Complete Heart Block with Profound Hypothyroidism and Inferior STEMI. Poster presented virtually at: American College of Cardiology National Meeting; March 2020, Chicago, IL, USA.

**Maini R, Tandan N, Ibrahim A,** Desai M. "A Rare Case of LangerhansCell Histiocytosis of the Lung and Thyroid Lymphoma in a Young Adult." Chest Annual Meeting, New Orleans. October, 2019. New Orleans, LA. Chest 2019;156(4):A1965. doi: 10.1016/j.chest.2019.08.1949.

**Maini R, Tandan N, Regmi MR, Parajuli P, Lara Garcia OE, Al-Akchar M.** "A Difficult Case of Constrictive Pericarditis Due to Rheumatoid Arthritis". American College of Cardiology National Meeting, virtual presentation, March 2020. Journal of the American College of Cardiology. March 2020. Journal of the American College of Cardiology JACC 2020;75(11):3334. doi: 10.1016/S0735-1097(20)33961-9

**Ranjha S, Cheema A, Ullah S,** Song M. (2020). Attack of the BCG; A Rare Case of Intravesical BCG Causing Pneumonitis. American Thoracic Society, Philadelphia, PA, United States. (May 2020, Conference Cancelled)

**Regmi, MR, Bhandari, B., &** Koirala, J. Fibrosing mediastinitis caused by Histoplasmosis. Presented at: Chest Annual Meeting, New Orleans. October, 2019. New Orleans, LA.

**Tandan N,** Ibrahim A, Al-Bast B, Maini R, Sambandam A, Kulkarni A. "A Curious Case of an Anomalous Artery Connecting the LAD and Pulmonary Trunk". Chest Annual Meeting, New Orleans. October, 2019. New Orleans, LA. Chest 2019;156(4):A367-A368. doi:10.1016/j.chest.2019.08.407.

**Tandan N, Ibrahim A, Maini R,** Song M, Labedi M. "TCAs Associated with Persistent Wide Complex Ventricular Tachycardia". Chest Annual Meeting, New Orleans. October, 2019. New Orleans, LA. Chest 2019;156(4):A316. doi: 10.1016/j.chest.2019.08.365

**Tandan N, Salih M, Al-Akchar M, Maini R, Cheema A, Regmi MR, Parajuli P, Bhandari B,** Labedi MR. "Hyponatremia in Post Cardiac Injury Syndrome: A Rare Clinical Feature". Virtual presentation at the Heart Rhythm Society Conference, May 2020. Heart Rhythm Society HRS 2020;17(5):S215. doi: https://doi.org/10.1016/j.hrthm.2020.04.007

**Tandan N,** Liao Hung-I, Adarkwah O, Prabhu H. "A Curious Case of Myocarditis with Elevated Antistreptolysin O Titers". Chest Annual Meeting, New Orleans. October, 2019. New Orleans, LA. Chest 2019;156(4):A399. doi: 10.1016/j.chest.2019.08.436

**Tandan N, Maini R, Chua F, Al-Akchar M,** Waqar S, Siddique M. "A Tale of Strange Bioprosthetic Valve Endocarditis: An Uncommon Presentation of Mitral Valve Endocarditis with Lactococcus garvieae". Virtual presentation, American College of Cardiology National Meeting, March 2020. Journal of the American College of Cardiology JACC 2020;75(11):2969. doi: 10.1016/S0735-1097(20)33596-8

**Ullah S, Ali M, Nayeemuddin F, Kyaw P,** Sreedhar R. Left upper lobe opacity; a diagnostic dilemma. Chest Annual Meeting, New Orleans. October 22, 2019. New Orleans, LA.

**Williams V, Jaju A, Ward S, O'Keefe DS, Abdelkarim J, Montes N,** Tarabachi U, Botchway A, Jakoby M. Impact of Perioperative Dexamethasone on Hospital Length of stay and glycemic control for Patients with Type 2 Diabetes Mellitus Undergoing Total Hip Arthroplasty. American Association of Clinical Endocrinologist (AAACE) online national poster session May 11, 2020

## MED/PSYCH –ALSO SEE PSYCHIATRY

**Abbot N,** Bottum K. "Know your serotonergic agents!" Poster presented at the American College of Physicians (ACP) downstate meeting (East Peoria, November 2019). Poster

**Bryant M,** Bottum K. "Drug induced autoimmune encephalitis from immune check point inhibitory chemotherapy." Poster accepted to American Psychiatric Association (Philadelphia, April 2020). Conference cancelled due to COVID-19.

**Carbrey S, Ibrahim A, Ali M, Sartawi T, Bakir MH.** "Ipratropium bromide nebulizer associated anisocoria." Poster accepted to CHEST conference (New Orleans, October 2019).

**Carbrey S,** Adaramola D, Bottum K. "Intraoperative awareness with explicit recall leading to post-operative PTSD in a patient with a paraganglioma." Poster presented at the Association of Medicine and Psychiatry Annual Conference (AMP) (Atlanta, October 2019). Dr. Carbrey received a Poster Presentation Award.

**Datey-Chakrabarty A,** Adaramola D. "Diagnosis ADD in patient with concurrent Gitelman syndrome." Poster submitted for the Association of Medicine and Psychiatry Annual Conference (AMP) (Atlanta, October 2019).

## NEUROLOGY

**Ume KL,** Dandapat S, Weber M, Zevallos C, Levy A, Ortega-Gutierrez S, Siddiqui F. Absence Of Hyperdense Middle Cerebral Artery Sign, As Measured On The Hounsfield Scale, Predicts Poor Functional Outcome And May Indicate Atherosclerotic Disease In Patients Undergoing Mechanical Thrombectomy For M1 Occlusion. International Stroke Conference 2020, Los Angeles, CA.

**Weber M, Ume KL,** Dandapat S, Zevallos C, Levy A, Siddiqui F, Ortega-Gutierrez S. Initial Non-contrast Computed Tomography Predicts Atherosclerotic M1 Occlusions And Poor Functional Outcomes After Mechanical Thrombectomy. International Stroke Conference February, 2020, Los Angeles, CA.

**Faisal Ibrahim,** Boulenouar Mesraoua, Dirk Deleu, M.Tom, A.Alsawaf, Hisham Elkhider, Najib Murr, "EEG findings and prognosis in post cardiac arrest anoxic brain injury," AES Meeting December 2019, Baltimore.

Hisham Elkhider, **Faisal Ibrahim,** "Autoimmune Encephalitis and Seizures; EEG, MRI and CSF abnormalities: a Case series," AES Meeting December 2019, Baltimore.

**Faisal Ibrahim,** M.Tom, **Joshua Battley, James Tanner,** Najib Murr, "Two Cases with post-cardiac arrest and reemergence of EEG reactivity," AES Meeting December 2019, Baltimore.

## NEUROSURGERY

**Michael, AP, Weber M,** Nie, J, Espinosa, JA. Improving Hospital Quality and Costs in Mild Traumatic Brain Injury. Invited for oral presentation at the American Association of Neurological Surgeons Annual Scientific Meeting, April 2020, Boston MA.

**Nordmann NJ, Michael AP,** Espinosa J. Resolution of Symptomatic Lumbar Synovial Cyst After Traumatic Event. Invited for poster presentation at American Association of Neurological Surgeons Annual Scientific Meeting, April 2020, Boston, MA.

**Jones, B, Michael AP, Lipson, A,** Siddiqui, F. An Interesting Surgical Technique and Literature Review: Multiple Telescoping Flow Diverting Devices for Embolization of Giant Carotid Artery Aneurysm. Invited for poster presentation at American Association of Neurological Surgeons Annual Scientific Meeting, April 2020, Boston, MA.

## OB-GYN

**Addo J.** The Role of Resident Advocacy in Reducing Maternal Health Disparities. National Medical Association Annual Convention & Scientific Assembly; Atlanta, GA – August 1-5, 2019.

**Nguyen L, Palencia L, Pratt K, Battley L,** Nelson E. Assessing Contraception Counseling During the Prenatal Period. 2019 District VI Annual Meeting of the American Congress of Obstetricians and Gynecologists (ACOG); Lake Geneva, WI – August 9-11, 2019.

**Dalla Riva S, Hamdan A, Hyon K, Addo J, Paar S, Nelson E.** Assessment of Estimated and Quantified Blood Loss after Cesarean Delivery. 2019 District VI Annual Meeting of the American Congress of Obstetricians and Gynecologists (ACOG); Lake Geneva, WI – August 9-11, 2019.

**Nguyen L, Hyon K,** Nelson E. Compliance with Gestational Diabetes Testing During Pregnancy and the Postpartum Period - Post-Implementation Analysis. 2019 District VI Annual Meeting of the American Congress of Obstetricians and Gynecologists (ACOG); Lake Geneva, WI – August 9-11, 2019.

**Battley L, Pratt K,** Loret de Mola JR, Ghareeb A, Siddique S, Garza-Cavazos A. Hemi-hysterectomy of Non-Communicating Rudimentary Horn Following a Missed Abortion. 48th AAGL Global Congress on Minimally Invasive Gynecology; Vancouver, BC Canada – November 9-13, 2019.

Nhung L, Cregger M, **Nguyen L,** Loret de Mola JR, Bremer P, Ghareeb A, Groesch K, Wilson T, Diaz-Sylvester P, Braundmeier-Fleming A. Pre- and Postoperative changes in Urinary Estrogen Metabolites in Women with Endometriosis. 2019 Illinois Symposium on Reproductive Science, Northwestern University's Center for Reproductive Science; Chicago, IL – November 13-14, 2019.

Kuroki L, Martin A, Massad LS, Lu E, Brown D, Min C, Delfino K, **Hyon K,** Groesch K, Wilson T, Diaz-Sylvester P, Kreuter M. Addressing unmet basic needs to improve adherence to follow-up for an abnormal Pap test. 2020 ASCCP Annual Scientific Meeting on Anogenital and HPV-Related Diseases; Orlando, FL – March 31 - April 3, 2020.

Loret de Mola JR, Le N , Cregger M, **Nguyen L,** Ghareeb A, Bremer P, Groesch K, Wilson T, Diaz-Sylvester P, Braundmeier-Fleming A. Alteration of Immune Profiles in Patients with Endometriosis. 14th World Congress on Endometriosis (WCE2020); Shanghai, China – May 8-11, 2020. \*Abstract was accepted for presentation; however, this meeting was postponed; Dubai, UAE - February 24-27, 2021 due to COVID-19 pandemic.

**Pratt K,** Groesch K, Wilson T, Diaz-Sylvester P, Delfino K, Spenner A, Nelson E, Abrams R. Implementing a Standardized Postpartum Discharge Protocol for Hypertensive Patients to Decrease Readmission Rates. Society for Academic Specialists in General Obstetrics and Gynecology (SASGOG); Seattle, WA – April 22-26 2020. \*Abstract accepted for presentation, awarded 2nd Place Oral Presentation.

## ORTHOPAEDICS

**Tapscott, DC.** "Morphology of the Greater Trochanter: An Assessment of Anatomic Variation and Canal Overhaul". OREF Fred Knowles MD Midwest Research Symposium. May 1, 2020, Loyola University Medical Center, Maywood, IL. (Meeting cancelled due to COVID-19)

**Wilson, CJ.** "Pedicule Screw Contamination During Spine Surgery". OREF Fred Knowles MD Midwest Research Symposium. May 1, 2020, Loyola University Medical Center, Maywood, IL. (Meeting cancelled due to COVID-19)

**O'Rourke, Ryan J.** "Injuries from Improper Child Restraint in Motor Vehicle Collisions". Podium Presentation, AAOS Annual Meeting, March 25, 2020, Orlando, FL. (Meeting cancelled due to COVID-19)

**O'Rourke, Ryan J.** "Continued Slip after Internal Fixation for Slipped Capital Femoral Epiphysis: Reasons for the Phenomenon". American Academy of Pediatrics, Section of Orthopaedics Annual meeting, October 26, 2019. (Senior Author: Kathleen A. McHale MD, MEd., Co-author: John V. Horberg MD)

**Beason AM, Arras N, Thayer J, Mailey BA.** "Anterior Scalene Muscle Block Use in Diagnosis of Thoracic Outlet Syndrome." Accepted for Podium Presentation at the 74th Annual Meeting of the American Society for Surgery of the Hand (ASSH); Las Vegas, NV. 7 September 2019.

**Blank, K.** "Plate Assisted Bone Segment Transport Utilizing Magnetic Intramedullary Limb Lengthening System: Five Patients". (LLRS) Limb Lengthening and Reconstruction Society's 28th Annual Scientific Meeting, July 19-20, 2019, Boston MA. Co-authors: Gardner M, **Beason AM,** Riley M.

Church DJ, **Blank K,** Horberg JV, Allan DG. "Treatment of Concomitant Coxaarthrosis & Greater Trochanteric Pain Syndrome: The Modified Hardinge Approach". E-Poster. 2020 AOA Annual Leadership Meeting. June 2020, Baltimore, MD.

Horberg JV, **O'Rourke RJ,** McIlvane C, McHale K. Continued Slip after Internal Fixation for Slipped Capital Femoral Epiphysis: Reasons for the Phenomenon. Mid-America Orthopaedic Association Annual Meeting April 2020 (Meeting Cancelled due to COVID-19).

## OTOLARYNGOLOGY

**Flaherty A,** Transcending the Gender Binary: The Science and Philosophy of Transgender Medicine. Guest Speaker, California Polytechnic State University, San Luis Obispo, CA. Feb 2020.

**Chen B,** Risks factors for electromyographic endotracheal tube migration during recurrent laryngeal nerve monitoring. Poster presentation. 2020 Triological Society Combined Sections Meeting, January 23-25, Coronado CA.

**Chen B,** The role of Pou4f3 in vestibular function. Poster presentation. 2020 Association for Research in Otolaryngology. January 25-29, San Jose, CA.

## PEDIATRICS

**Aya El Jerbi, MD.** "M-Mode Interventricular Systolic Plane Excursion: A New and Simple Method to Evaluate Presence of VSD by Meternal-Fetal Ultrasound, CHoP Cardiology Conference, Lake Buena Vista, FL. February 2020

**Aya El Jerbi, MD.** "Early Coiling of Collaterals in a Critically Ill Infant with Scimitar Syndrome. Pediatric and Adult Interventional Cardiac Symposium, San Diego, CA. September 2019

**Aya El Jerbi, MD.** "Not Just Another Adolescent with Chest Pain: Severe Coarctation of Aorta. Pediatric Hospital Medicine Conference, Seattle WA July 2019

**Jon Schweber, MD.** "TGFB3-related Loey's-Dietz Syndrome causes arterial tortuosity in two patients and Concurrent Klinefelter Syndrome in one prevents aortic dilation". American Society of Human Genetics. Houston TX. October 2019

**Amy Joseph, MD** "An Indirect Route to Finding the Etiology of Direct Hyperbilirubinemia in a 2 month old Infant." An Oral Conundrum Presentation, Virtual Pediatric Hospitalist Medicine Conference July 2020

**Yuri Fedorovich, MD** "Interdisciplinary Collaboration between Healthcare, Education, and Daycare to Promote Child Brain Development." AAP NCE. New Orleans, LA. Poster. October 2019

## PLASTIC SURGERY – SEE ALSO ORTHOPAEDICS

**Timothy Daugherty, MD/Jacob Thayer, MD.** "Targeted Muscle Reinnervation in the Lower Leg: Surgical Technique When Performed at the Time of Below-Knee Amputation", American Society of Plastic Surgeons, San Diego, CA, Sept. 2019

**Timothy Daugherty, MD/Jacob Thayer, MD.** "The Mechanism of Skin Improvement in Radiation Wounds Following Fat Grafting: The Fate of Adipose Derived Stem Cells and Role of Stromal Vascular Fraction" American Society of Plastic Surgeons, San Diego, CA, Sept. 2019

## Publications, Presentations and Research

**Jacob Thayer, Greg Lee, Brian Mailey.** “Fluoroscopic Guidance for Portal Placement in Wrist Arthroscopy”(poster), American Society for Surgery of the Hand Annual Meeting, Las Vegas, NV, Sept. 2019

**Jacob Thayer, Brian Mailey,** Versatility of the Berger - “Tenenhaus Approach for Mandibular Fractures” (podium), American Society of Plastic Surgeons Annual Meeting, San Diego, CA, Sept. 2019

**Kottwitz K, Mailey B.** “SPINE: A systems approach for Complete Care of the Pressure Sore Patient” American Society for Plastic Surgeons, San Diego, CA Sept 2019

**Daugherty, T.H.F.,** Bueno Jr, R.A., Mailey, B.A., Neumeister, M.W “Targeted Muscle Reinnervation in the Hand: An Anatomic Feasibility Study for Neuroma Treatment and Prevention”. 2019 American Society for Peripheral Nerve Annual Meeting. Fort Lauderdale, FL. January 2020

**Bruce, William J. MD;** Delfino, Kristin PhD; **Thayer, Jacob A. MD;** Harrison, Carrie E. BS; Schmucker, Ryan W. MD Neumeister, Michael W. MD, FRCS, FACS Author Information. Abstract 41: Reactions of Fibrotic Skin To Fat Grafting In A Rodent Model. Plastic Surgery Research Council- 2020

**Daugherty, Timothy H.F. MD, MS;** Mailey, Brian A. MD; Bueno, Reuben A. Jr. MD; Neumeister, Michael W. MD. Abstract 118: Targeted Muscle Reinnervation In The Hand: An Anatomical Study For Identification Of Target Motor Entry Points. Plastic Surgery Research Council- 2020

### PSYCHIATRY – SEE ALSO INTERNAL MEDICINE/PSYCHIATRY

**Cudjoe N, Rebeiro S, Sharma S, Ahmed M,** Hill-Jordan J, Hansen J. “Assessing physician attitudes and knowledge about intimate partner violence: Utilizing assessment tools to guide future directions.” Poster submitted to the American Psychiatric Association (Philadelphia, April 2020). Both conferences cancelled due to COVID-19.

El-Amin W, **Cudjoe N,** Todd C, Robinson-McNeese WG, Koehler J, Hurst K, Sulmers C. “Moving the needle toward health equity: Making a commitment to be an antiracist institution.” Poster presented at the AAMC 2019 AAMC Group on Faculty Affairs (GFA) and Group on Women in Medicine and Science (GWIMS) Joint Professional Development Conference (Chicago, July 2019).

**Jia S,** Puga W. “Negative symptoms in schizophrenia.” Presentation at the Illinois Department of Corrections (March 2020 and June 2020)

### PULMONARY DISEASE – SEE ALSO INTERNAL MEDICINE AND INTERNAL MEDICINE/PSYCHIATRY

**Saad Ullah, Mirza Ali, Faraaz Nayeemuddin, Phyo Phyo Kyaw,** Rajagopal Sreedhar. Left upper lobe opacity; a diagnostic dilemma. ACCP Chest 2019 Conference, New Orleans, October 2019

**Johnathan Fagg, Faraaz Nayeemuddin,** Rajagopal Sreedhar. An alternative cause of hemoptysis: microscopic polyangiitis. ACCP Chest 2019 Conference, New Orleans, October 2019

**Movses Hayrbedian MD, Suhaib Ranjha MD,** John Gao MD. Atypical Case of Pulmonary Langerhans Cell Histiocytosis Misdiagnosed as Endocarditis. ACCP Chest 2019 Conference, New Orleans, October 2019

**Phyo Kyaw, F Nayeemuddin, S Ullah, M. Song.** Rare etiology of interstitial lung disease. ACCP Chest 2019 Conference, New Orleans, October 2019

### SPORTS MEDICINE – QUINCY

**Nash N,** Daniels JM, Miller-Spears E, Carmichael R. Kindness for Weakness. (virtual poster presentation) 2020 Annual Meeting American College of Sports Medicine. May 28, 2020.

**Nash N,** Daniels JM, Miller-Spears E, Carmichael R. Kindness for Weakness. (virtual poster presentation) 2020 Annual Meeting American Medical Society of Sports Medicine. April 25-29, 2020.

## SURGERY

**Poola P, Feimster J, Kauffman M.** Impact of robotic surgery platform on medical student teaching during surgery and gynecology clerkships: Single Institutional experience. Podium Presentation (virtual). National Surgical Education Week, April 29, 2020

## UROLOGY

**Wesley Bass, Grampsas.** The case of the incidentally found dinosaur egg testicles. North Central Sections of America Urological Association, September 2019

## RESEARCH

### ADULT RECONSTRUCTION

**Abdalnasser Zayed, MD** “Prosthetic Joint Infection after Polyethylene Exchange for Accelerated or Uneven Polyethylene Wear”

### DERMATOLOGY

2019-present-JADE Adult/teen/long term extension –**Song B; Schnietz, R,** sub-investigator A Phase 3 randomized, double-blind, double-dummy, placebo-controlled, parallel group, multi-center study investigating the efficacy and safety of PF-04965842 and dupilumab in comparison with placebo in adult subject on background topical therapy, with moderate to severe atopic dermatitis

2018-present-POETYK PSO 2 – **Song, B; Minielly, K; Schnietz, R,** sub-investigator A multi-center, randomized, double-blind, placebo- and active comparator-controlled phase 3 study with randomized withdrawal and retreatment to evaluate the efficacy and safety of BMS-986165 in subjects with moderate-to-severe plaque psoriasis

2017-present- Corrona Psoriasis Registry –**Song, B; Minielly, K; Schnietz, R,** sub-investigator Longitudinal observational study on the comparative safety of systemic psoriasis treatments

Jun 2017 – Present- PSOLAR--**Minielly, K; Schnietz, R,** sub-investigator Longitudinal observational study to evaluate the safety of infliximab, ustekinumab, and guselkumab in patients with plaque psoriasis

### ENDOCRINOLOGY

18-271 Dexamethasone, Glycemic Control, and Hip Arthroplasty. **M Ansari MD, R Kanta MD, A Jaju MD, V Williams MD**

19-384 Hospital hypoglycemia protocol and glycemic control. **M Ansari MD, R Kanta MD, A Jaju MD, V Williams MD**

### HEMATOLOGY / ONCOLOGY

High risk head and neck squamous cell carcinoma patients who received chemotherapy and/or radiation without use of Cisplatin. **F Zaidi, A Hannan**

AKR1B10 As a New Biomarker for Breast Cancer. **F Zaidi, A Hannan**

### FAMILY & COMMUNITY MEDICINE – SPRINGFIELD

Co-Investigators: **Berg, Ethan; Cong, Lana; Oesterling, Ben.** RB Protocol: What does our frontline staff know about osteopathic manipulative medicine?

### INFECTIOUS DISEASE

Sundareshan, V., **Chua, M.** & Nida, S. (2019) ... A Comparative Analysis of In Vitro Susceptibilities of Vancomycin-Resistant Enterococci Against Doxycycline, Minocycline, Tigecycline, Eravacycline and Omadacycline,” Southern Illinois University School of Medicine. Advisor: Vidya Sundareshan, MD, MPH, FACP, FIDSA.

## Publications, Presentations and Research

## OB-GYN

Brard L, Braundmeier-Fleming A, Chowdhury F, Diaz-Sylvester P, Garza-Cavazos A, Hales D, Hales K, **Nguyen L,** Younkin C. Biomarkers for Endometrial and Ovarian Cancer (IRB# 16-493).

Brard L, Braundmeier-Fleming A, Chowdhury F, Diaz-Sylvester P, Garza-Cavazos A, Hales D, Hales K, **Nguyen L,** Younkin C. Diagnostic Utility of Culdocentesis in Patients with a Suspicious Adnexal Mass (IRB# 12-656).

Braundmeier-Fleming A, Abrams R, **Addo J,** Buedefeldt-Pollard J, Garza-Cavazos A, Martin JA, Nelson E, Thompson G, Unal E. Preterm Birth and the Microbiome (IRB# 14-185).

Braundmeier-Fleming A, **Battley L,** Brard L, Garza-Cavazos A, Gonzalez Osorio E, Holland T, Le N, Loret de Mola JR, Martin JA, Nelson E, Nguyen L, Roy R, Zeino Y. Endometriosis and the Microbiome (IRB# 14-220).

Loret de Mola JR, Bremer P, **Dalla Riva S, James E.** HbA1c vs. OGTT in the Detection and Diagnosis of Prediabetes and Type II Diabetes Mellitus in Reproductive Age Women with Polycystic Ovarian Syndrome (IRB# 19-477).

Loret de Mola JR, Caswell K, Lara-Cinisomo S, **Palencia L.** Diabetes, Prenatal Depression and Self-rated Health: Exploring the mediating role of self-efficacy (IRB# 17-098).

Martin JA, **Hyon K,** Zeino Y. Addressing Unmet Basic Needs to Improve Colposcopy Adherence among Women with an Abnormal Pap (IRB# 17-105).

Nelson E, **Almdale A, Butlin A, Hyon K, Nguyen L.** SIU-SOM Compliance with 3-hour Glucola Testing and Postpartum Follow-Up for Patients Diagnosed with Gestational Diabetes (IRB# 18-186).

Nelson E, **Almdale A, Hamdan A, Hyon K.** Assessment of Estimated and Quantified Blood Loss after Cesarean Delivery (IRB# 19-409).

Nelson E, **Battley L, Palencia L, Pratt K.** Assessing Contraceptive Counseling during the Prenatal Period (IRB# 19-412).

Nelson E, **Hamdan A, James E, Pratt K, Swale L.** Assessing Food Insecurities during Gestation (IRB# 20-594).

Younkin C, **Ouyang W, Swale L, Unal E.** Vitamin D Deficiency and Its Implications on the Fetus (IRB# 17-080).

Zeino Y, Brard L, **Battley L.** Prophylactic Salpingectomy Analysis: A Risk Reduction Procedure for Ovarian Cancer (IRB# 17-104).

## ORTHOPAEDICS

**Al-Attar, Paul, Christine DiPompeo, Brian Kurcz, Hamadi Murphy,** VanFleet, Williams. Expandable vs. Nonexpandable Cage in Minimally Invasive

**Bailey James,** Chris Maender. Thumb carpometacarpal joint denervation for painful osteoarthritis – is it a viable option?

**Bailey James, Mitchelson.** MCP Joint Denervation in the Treatment of Dietrich's Disease

**Bailey James, Tapscott, Otsuka.** Bringing Physical Exam Skills Back From The Dead”--- Evaluating the Effectiveness of Soft Embalmed Cadavers in Teaching Physical Exam to Medical Learners

**Bailey James, Allan.** Cement Penetration in TKA w/ and w/out Tourniquet

**Beason Austin,** Barinaga, Sembell E, Wottowa. Biceps Crease Interval and Ratio in Diagnosis of Partial Ruptures of Distal Biceps Tendon

Koirala, J., **Chua, M., Pervin, N.** & Nida, S. (2019). “Meropenem and Ceftolozane-Tazobactam Synergy Testing Using the Broth Microdilution Method Against XDR Pseudomonas aeruginosa and Acinetobacter baumannii,” Southern Illinois University School of Medicine. Advisor: Janak Koirala, MD, MPH, FACP, FIDSA.

Koirala, J., **Chua, M., Pervin, N.** & Nida, S. “Meropenem and Ceftolozane-Tazobactam Synergy Testing Using the Broth Microdilution Method Against XDR Pseudomonas aeruginosa and Acinetobacter baumannii,” PI: Francine Chua CO-I Janak Koirala, MD, MPH, FACP, FIDSA. Award: Memorial Foundation \$20,000 from January 2019 to January 2020

## INTERNAL MEDICINE

**Abu Limon I, Regmi MR, Parajuli P.** A pilot study of Rheumatoid Arthritis in hepatitis C patients- The purpose is to find a better scientifically proven way of differentiating Hepatitis C arthropathy from Hepatitis C patients with Rheumatoid arthritis as both groups can present similarly. Status: IRB approved; data collection phase

**Bhandari B, Tandan N, Ibrahim A, Vlamis C, Niaz Z, Regmi MR, Parajuli P,** Siddique M, Kulkarni A. Comparison of Low-Density Lipoprotein outcomes in patients using Proprotein convertase subtilisin–kexin type 9 (PCSK9) inhibitor as a monotherapy versus dual therapy (statin and PCSK9 inhibitor). Status: IRB approved; manuscript writing phase

**Parajuli P, Regmi MR, Lara-Garcia OE,** Botchway A, Labedi M, Hafiz AM. A Study for the Evaluation and Assessment of Functional Status, Physical Performance, and Quality of Life in Patients with Atrial Fibrillation with Aortic Stenosis Who Underwent Transcatheter Aortic Valve Replacement (TAVR) in Comparison to Those with Normal Sinus Rhythm. Status: IRB approved; data collection phase

**Regmi MR, Parajuli P, Lara Garcia OE, Bhandari B, Abu Limon I, Tandan N, Maini R,** Botchway A, Kulkarni A. Outcomes in patients with percutaneous Patent Foramen Ovale (PFO) and Atrial Septal Defects (ASD) closure with an occluder device: Experience from an Academic Tertiary Center in the Midwest. Status: IRB approved; manuscript writing phase

## NEUROLOGY

**Ume K,** Siddiqui F, Fifer A. Yield of Transthoracic Echocardiogram (TTE) in Acute Ischemic Lacunar Strokes.

**Ume K,** Fifer A, Muehle C, Siddiqui F. Identifying Risk Factors for Unsuccessful Mechanical Thrombectomy in Acute Ischemic Stroke.

Al Sawaf A, **Ibrahim F, Fifer A.** Epilepsy Clinical Database.

Vost K, Allam H, **Ibrahim F.** Venous Thromboembolism Prophylaxis in Hemorrhagic Stroke Patients: Comparative Safety and Efficacy of Unfractionated Heparin Dosing Intervals.

Allam H, **Ibrahim F,** Fifer A. Systemic White Blood Cell count as a Biomarker for Malignant Cerebral Edema in Massive MCA Stroke.

Al Sawaf A, **Kohli A,** Fifer A. Improving Administration Time of Anti-Epileptic Drug Load Doses in Patients with Status Epilepticus.

Allam H, **Abbas A, Tarabichi A,** Fifer A. Is Elevated Troponin Level at Initial Presentation Associated with an Increased Risk of Symptomatic Intracerebral Hemorrhage?

Jahangir N, **Farooqi M,** Lanzotti N, Fifer A. Using Already Validated Ischemic Stroke Outcome Prediction Tools to Predict Long-Term Patient Outcomes when Utilizing Mechanical Thrombectomy to Treat Ischemic Stroke.

## NEUROSURGERY

**A Michael.** Memorial Medical Center Foundation, Research Grant to determine how 5-ALA dose effects extent of tumor resection and overall patient survival.

## Publications, Presentations and Research

**Beason Austin, Wilson,** Stevens. Fusion rate of 1-2 intermetatarsal arthrodesis in the modified Lapidus procedure for the treatment of Hallux Valgus

**Beason Austin,** Neumeister. LGR+ Stem Cells Augment Osteogenesis on Bone Defect Scaffolds

**Beason Austin,** Gardner. Plate-Assisted Bone Transport vs. Bone Transport Nail

**Beason Austin,** Brian Mailey. Anterior Scalene Muscle Block Predicts Response from Thoracic Outlet Decompression

**Blank Kory, Ryan O'Rourke, Allan.** Treatment of Concomitant Coxaarthrosis & Greater Trochanteric Pain Syndrome: The Modified Hardinge Approach Opiate vs non-opiate

**DiPompeo Christine, Inabathula, Kay,** El Bitar. Rotator Cuff Repair Meta-Analysis

**DiPompeo Christine.** Risk of Osteomyelitis in Seymour Fractures

**DiPompeo Christine.** Hip Fracture Preop block quality study

**DiPompeo Christine, Kay,** Nestler A, Allan. ASA for DVT PPX Post op TKA, THA: as effective for women and men?

**Hamadi Murphy.** Composite NDI score or specific domains is correlated to change in physical function.

**Hamadi Murphy.** Discharge Disposition Project

Horberg John **Ryan O'Rourke.** Morphology of the Greater Trochanter: Anatomic Variation in Canal Overhang

Horberg John **Ryan O'Rourke.** Prosthetic Joint Infection after Isolated Tibial Polyethylene Exchange for Aseptic Instability

Horberg John **Ryan O'Rourke.** Complications Associated with Short Stem Femoral Prostheses in Total Hip Arthroplasty via a Direct Anterior Approach

Horberg John, **Brian Kurcz,** Inabathula Avinash. Ancef Allergies

**James Lieber, Allan.** Zimmer Temperature difference in saw blades

**Josifi Erlena.** Radiographic short-term outcome for FNS

**Josifi Erlena.** High-energy femoral neck patients in young patients undergoing FNS

**Josifi Erlena.** FNS complications and failures

**Kurcz Brian, Murphy, Al-Attar, DiPompeo, VanFleet.** Co-Flex Interlaminar Device Short to Mid-Term Outcomes **Kurcz Brian, Murphy,** Yarnell C, Piero Capecci, D Gordon Allan, Dane Church, John Horberg. Surgical Site Infection in Total Hip Arthroplasty: Incidence and Prevention Based on Local Subcutaneous Tissue Depth

**Kurcz Brian, Otsuka.** Supracondylar Distal Humerus Fracture Medial Pinning Technique

**Kurcz Brian,** Horberg, Allan. Documented Penicillin Allergies Should Not Preclude Use of Pre-Operative Cefazolin in Hip and Knee Arthroplasty

**Lieber James,** Allan. Thermal Necrosis Risk Associated with Bone Cutting During Robotic Total Knee Arthroplasty

**Mitchelson Andrew.** Medial Epicondyle Fracture Case Study

**Mitchelson Andrew.** Hand Amputations

**Mitchelson Andrew.** Calf Muscle Pump Function

**Mitchelson Andrew, James Lieber,** AJM, El-Bitar, Ma. Trends in epidemiology and associated co-morbidities of the adult humerus fractures

**Mitchelson Andrew.** Gastrocnemius recession

**O'Rourke Ryan, Kory Blank,** John Horberg, Benjamin Ryan, Benjamin Stevens. Clinical Outcomes after delayed open reduction internal fixation for talus fractures utilizing dual and triple incision approach

**O'Rourke Ryan, Avinash Inabathula,** John Horberg, Allan. Periprosthetic femur fracture rate among three different femoral component designs in total hip arthroplasty

**Tapscott David.** Orthopedic Implants

**Tapscott David.** Does Prior Superior Capsular Reconstruction Affect Initial Glenoid Baseplate Fixation Failure Strength?

**Wilson Craig, Austin Beason.** Fusion rate of 1-2 intermetatarsal arthrodesis in the modified Lapidus procedure for the treatment of Hallux Valgus

**Wilson Craig, David Tapscott, Andrew Mitchelson.** Pedicle Screw Contamination During Spine Surgery

### OTOLARYNGOLOGY

**Betty Chen, Henya Sandhaus,** Eric Adjei-Boakye, Brent Van Ham, Arun Sharma (PI) Delay in Radiation Therapy of Head and Neck Cancer in the COVID-19 Era.

**Betty Chen, Thymur Chaudhry,** Simon Bekker, Eric Adjei, Matthew Johnson (PI) Evaluating Patterns of Change in Facial Skeletal Aging.

**Betty Chen,** Eric Adjei, Pardis Javadi, Dana Crosby, Arun Sharma (PI) Risks factors for electromyographic endotracheal tube migration during recurrent laryngeal nerve monitoring

**Henya Sandhaus,** Dana Crosby, Arun Sharma, E Adjei, Matthew Johnson (PI) Incidence of facial fractures in association with laceration from dog bite in the pediatric population.

**Mitchell Heuermann,** Pardis Javadi, Arun Sharma, Dana Crosby, Danuta Dynda, Matthew Johnson (PI) Facial reanimation practice patterns of facial plastic surgeons.

**Sara Wing,** Nnenna Ezeilo, Pardis Javadi, Jeffrey Wang, Arun Sharma (PI) Assessing the performance of Afirma Gene Expression Classifier in predicting the risk of malignancy in indeterminate thyroid nodules.

**Sara Wing,** Arun Sharma (PI) Survival and Quality of Life outcomes in Oral Cavity SCC between Subsites.

### PEDIATRICS

Implementation of Pediatric Intravenous to oral/enteral - Dr. Ezzeldin Saleh & **Dr. Jon Schweber**

Impact of Film Array Respiratory Panel Assay on Healthcare Resources for Pediatric Patients - Dr. Marcela Rodriguez & **Dr. Sarah Chamanara**

Rapid Strep Tests Used in Children Less than 3 Years Old - Dr. Subhash Chaudhary & **Dr. Jenna Goeckner**

Standardizing Family Centered Rounds in the PICU - Dr. Kim Powell & **Dr. Amy Joseph**

Prevalence of Intracardiac Echogenic Foci in Fetuses Exposed to THC - Dr. Hani Ghawi & **Dr. Aya El Jerbi**

M-mode Interventricular Systolic Plane Excursion: A New and Simple Method to Evaluate Presence of VSD by Maternal-Fetal Ultrasound - Dr. Hani Ghawi & **Dr. Aya El Jerbi**

Investigating Therapeutic Options for Pediatric Patients with Low HDL Levels - Dr. Hani Ghawi & **Dr. Jenna Goeckner**

The Effect of Atrial Septic Defects on the Development of Bronchopulmonary Dysplasia in Premature Infants - **Dr. Hani Ghawi & Dr. Adora Anudu**

Improving Resident Clinic No Show Rates - Dr. Hani Ghawi & **Dr. Adora Anudu**

Qualitative Assessment of Patient's Choice to Be Seen at Prompt Care/Express Care over Resident Ambulatory Clinic at SIU Pediatrics - Dr. Michelle Miner & **Dr. Nick Lukert**

AAP Maternal and Infant Health Opioid Use ECHO - Dr. Meredith Volle & **Dr. Nick Lukert**

Incidence and Severity of Hyperbilirubinemia in Neonates Treated with Therapeutic Hypothermia - Dr. Farooq Ahamed & **Dr. Caitlyn Berg**

Timing on Newborn Screen in NICU-Impact of Revised Protocol - Dr. Farooq Ahamed & **Dr. Mohammad Jaber**

Simulation Based Learning...an Answer for Hesitation - Dr. Farooq Ahamed & **Dr. Sarah Furqan**

Clinical relevance of time to positivity of Coagulase Negative Staphylococcus in Blood Culture - Dr. Venkata Majjiga & **Dr. Zach Emmons**

Clinical Implication of Time to Positive Blood Culture Among Coagulase Negative Staphylococcus Species - Dr. Venkata Majjiga & **Dr. Zach Emmons**

Universal Umbilical Cord Gas Analysis: What Happens to the Results - Dr. Dharmendra Nimavat & **Dr. Aya El Jerbi**

KUB Post Bowel Clean Out - Dr. Prasthanth Porayette & **Dr. Andrew Bernales**

Conjoint Medical-Behavioral Consultation Quality Improvement Project - Dr. Anna Hickey & **Dr. Sarah Chamanara**

Determining the Need for Respite Care for Families of Children with Special Health Care Needs - **Dr. Janet Patterson & Dr. Stephanie O'Brien**

### PLASTIC SURGERY

**Ruffolo A,** Mailey B. Prevention of Tendon Adhesions with Systemic Immunosuppression

**Olla D, Beason A** (Ortho resident), Neumeister M. Stem Cell Based Vascularized Bone and Cartilage Construct.

**Ruffolo A, Bruce W,** Neumeister, M Resiniferatoxin Treatment as an Effective Modulator of Pain Resulting from Burns.

**Lee G,** Neumeister M. Developing TRAIL Flap for Breast Cancer Treatment

**Winters J, Olla D,** Neumeister M. The Role of the NOTCH Pathway in Heterotopic Ossification.

**Bruce W,** Neumeister M. Promoting Burn Wound Healing With Cold Plasma

**Ruffolo A,** Mailey B. The Effects of Hyperbaric Oxygen Treatment on Auto-Transplantation

**Olla D, Romanelli M,** Neumeister M. Competency-Based Microsurgery Education with Timely Targeted Feedback

**Olla D, Daugherty T,** Bueno R. Nail bed Repairs and Rate of Antibiotic Prescriptions

**Olla D,** Berry N. Coding and Billing Survey

**Bruce W,** Berry N. Routine Perfusion Imaging in Surgical Education with Timely Targeted Feedback

## Publications, Presentations and Research

**Thayer, J, Beason A,** Mailey, B. Quality Assessment Project Evaluating Patient Reported Outcomes after Thoracic Outlet Syndrome

**Daugherty T,** Neumeister M. Epical cultured epidermal autografts HUD

**Hutchinson L,** Sommer N. Autologous Fat Grafting at the Time of Reduction Mammoplasty for Resolution of Shoulder Groove Deformity

**Olla D,** Sommer N. Quality Outcomes Review: Salvage of Infected Breast Prosthesis

**Daugherty, T, Kottwitz K, Hutchinson L, Lee G, Thayer J, Winters J,** Sommer N. Breast Reduction Assessment (BRA): Aesthetic Shape Outcomes of Reduction Mammoplasty Surgery

**Neumeister E,** Sommer N. The Adult Aesthetic Surgery Survey: An Aesthetic Surgery Screening Instrument

**Olla D,** Sommer N. Reducing Opioid Use in Breast Surgery through ERAS Protocols at Memorial Medical Center

**Daugherty T,** Neumeister M. Anatomic Cadaver Study of Nerves in the Hand for Targeted Muscle Reinnervation for Prophylactic Neuroma Prevention to Decrease Opioid Use.

### PULMONARY DISEASE

P.I.: Sreedhar, Rajagopal V, MD. Co-Investigators: **Nayeemuddin F, Ullah S, Sartawi T.** "Bipi 1199-0324: the study of pulmonary rehabilitation in nintedanib treated patients with ipf: improvements in activity, exercise endurance time, and qol (boehringer ingelheim pharmaceuticals, inc. – 1199-0324)". BIPI 1199-0324. Reference #: 020728

### UROLOGY

Mathews, Dynda, **Wesley Baas.** Penile Length in pediatric urology. Expedited. 17-103.

Dynda, **Wesley Baas, Holland, Hart.** Surgeon Parathesia during robotics surgery. NHSRD. 19-365.

Tadros, **Holland, Robert Petrossian.** Prevalence of hypogonadism in resident physicians. 18-356.

West, Mathews, Nelson, **Robert Petrossian.** The Role of Constipation in Children with bladder and bowel dysfunction. 19-370.

Tadros, **Robert Petrossian.** Efficacy of Rezum Water Vapor Thermal Therapy for Large Prostates over 80 grams. 20-662.

### VASCULAR SURGERY

PI - Hood Sub-l's - Hodgson, Hasanadka. Participating Clinicians - **Choudry, Nanavati, Zhang.** Bayer Healthcare Pharmaceuticals Inc, An International, Multicenter, Randomized, Double-Blind, Placebo-Controlled Phase 3 Trial Investigating the Efficacy and Safety of Rivaroxaban to Reduce the Risk of Major Thrombotic Vascular Events in Patients with Symptomatic Peripheral Artery Disease Undergoing Lower Extremity Revascularization Procedures.

PI - Hodgson/Hood, Sub-l's - Hood, Hasanadka. Participating Clinicians - **Choudry, Nanavati, Zhang.** W.L. Gore & Associates, Inc., Assessment of the GORE® EXCLUDER® Conformable AAA Endoprosthesis in the Treatment of Abdominal Aortic Aneurysms: AAA 13-03

